

D1 QHD USER GUIDE



23.8Inches

Multi-functional Smart Display

Warm tips:

1. Please ensure type-c data cable is connected well with device interface.
2. Due to the high power consumption of the D1 QHD screen, if the screen brightness is insufficient or the screen cannot be turned on, a standard adapter in the gift box should be connected to adjust the brightness.

Windows

Mac

Android

Product Introduction

D1 QHD is a structurally innovative, rotatable, height-adjustable, foldable, multi-scenario, multi-application portable desktop monitor. It also features a 2.5K 180Hz gaming-grade display, enabling rapid setup of a personal mobile workstation. It supports primary display use, multi-screen synchronized/independent modes, and boosts efficiency by 50%. Compatible with Samsung/Huawei phones via full-featured Type-C, smartphone desktop modes, and audio-video transmission.

The D1 QHD stand allows height adjustment, rotation, detachment, and portability. The screen attaches magnetically and offers ergonomic adjustments. It designed to cater to the diverse needs of professionals, office workers, gamers, stock traders, entrepreneurs, programmers, and students, delivering tailored user experiences for each group.

The D1 QHD screen supports brightness/volume/contrast controls. With HDMI/Type-C/AUX/USB-A ports, it eliminates the need for a docking station. Compatible with Type-C laptops, HDMI desktops, mini PCs, and gaming consoles. Requires external power.

Finally, the D1 QHD screen supports 0-90° rotation and both landscape/portrait orientations, allowing optimal viewing angles.

Contents Of Instruction

Product Attributes

1. Product host	1
2. Accessories	1
3. Parameters	1

Installation and Storage

1. Expand the monitor	2
2. Mounting Bracket/Screen	2
3. Expanded Direction	2
4. Storing your monitor	3

Key Definitions	3
-----------------------	---

Connection

1. Connect D1 QHD with Laptop	4
2. Device power supply connection mode	5

Audio Settings

1. Change sound settings of Windows 10 / Windows 11	6
2. Change sound settings of MAC OS PC	7

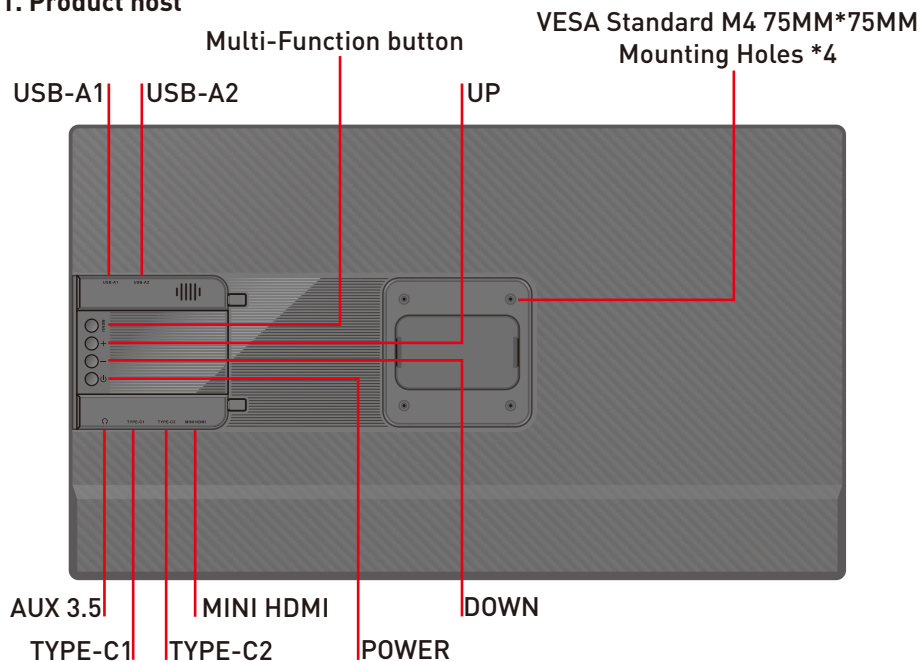
Display Mode

1. Windows 10 / Windows 11 Display Settings and Configuration	8
2. MacOS 13 Ventura Display Settings and Configuration	9

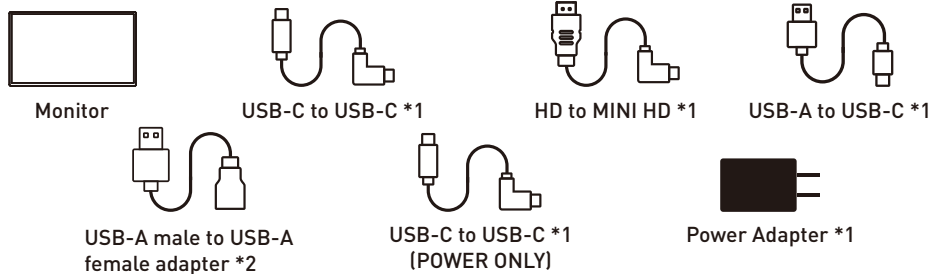
Transportation, Storage and Safety Information	10
--	----

Product Attributes

1. Product host



2. Accessories



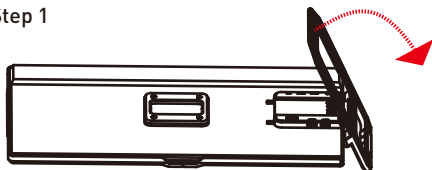
3. Parameters

Model:	D1 QHD	Screen Size:	23.8 Inches
Aspect Ratio:	16:9	Panel Type:	IPS Wide Viewing Angle
Size:	612x327x32.8mm	Brightness:	300CD/M ²
Refresh Rate:	180Hz	Type-C Input:	5V-20V / 5A Max
Resolution:	2560x1440 P	Type-C Output:	5V-20V / 4A Max
Speaker:	1	Ports:	Type-C*2+MINI HDMI +AUX 3.5+USB 2.0*2
Weight:	2.81KG	USB-A Transfer Speed:	12-480mbps

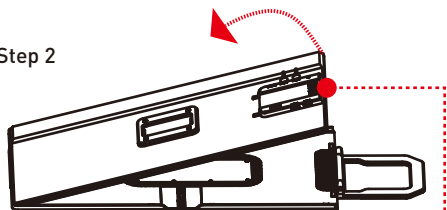
Installation and Storage

1. Expand the monitor

Step 1



Step 2

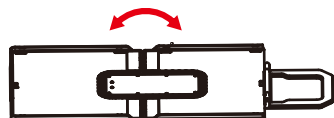


Disassemble the screen here

*NOTE: Please follow the direction to expand the monitor to avoid damage.

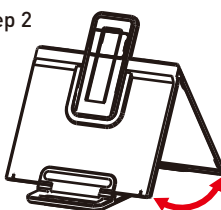
2. Mounting Bracket/Screen

Step 1



Foldable Stand

Step 2

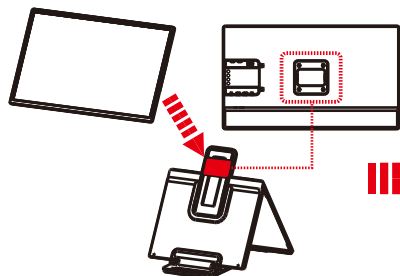


Handle folds approximately 70° for tabletop placement



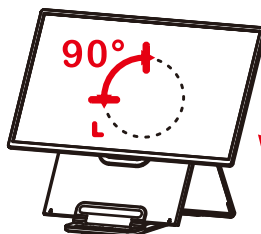
Maximum opening angle: 0-75°

Step 3



Align the screen mounting holes with the suction cup bracket and secure into place.

Step 4



Supports 0-145MM free suspension

3. Expanded Direction



Landscape Display

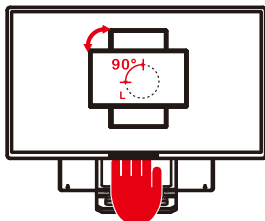


Portrait Display

Installation and Storage

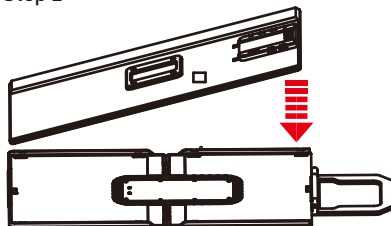
4. Storage

Step 1



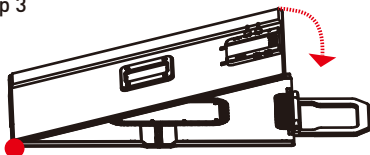
Please move the screen away from this area to prevent damage to it.

Step 2



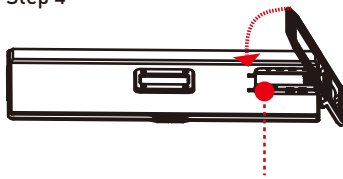
Place the screen face down

Step 3



Align and install into the storage slot on the left side of the bracket

Step 4



After the screen is neatly placed, the handle should be flipped over and inserted into the limit slot of the screen protrusion

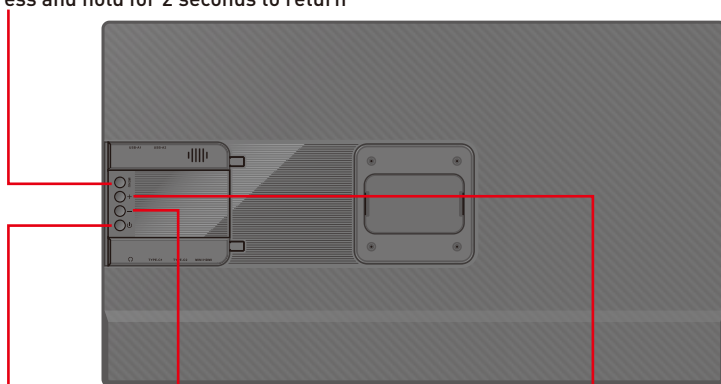
***NOTE:** Be sure to store the screen in the above-mentioned order to avoid damaging it

Key Definitions

"Press and hold for 1 second to confirm"

Menu/Selection/Confirmation Button

Press and hold for 2 seconds to return



"Minus"

Backlight Adjustment

"Plus"

Volume Adjustment

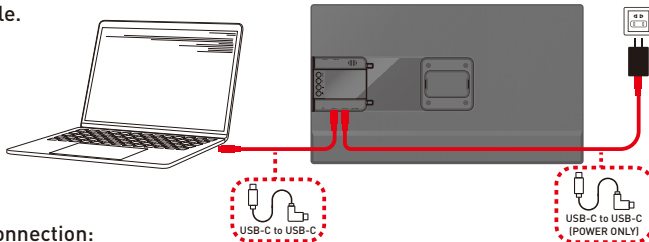
Power button: Press and hold for 3 seconds to shut down

How to Connect

1.Connect D1 QHD with Laptop

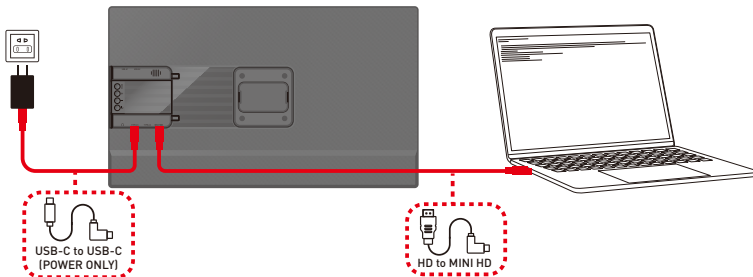
TYPE-C Connection:

If your laptop has a full-featured Type-C port, use a USB-C to USB-C cable to connect the device to the laptop. Simultaneously, power the device via the included PD adapter and USB-C to USB-C charging cable.



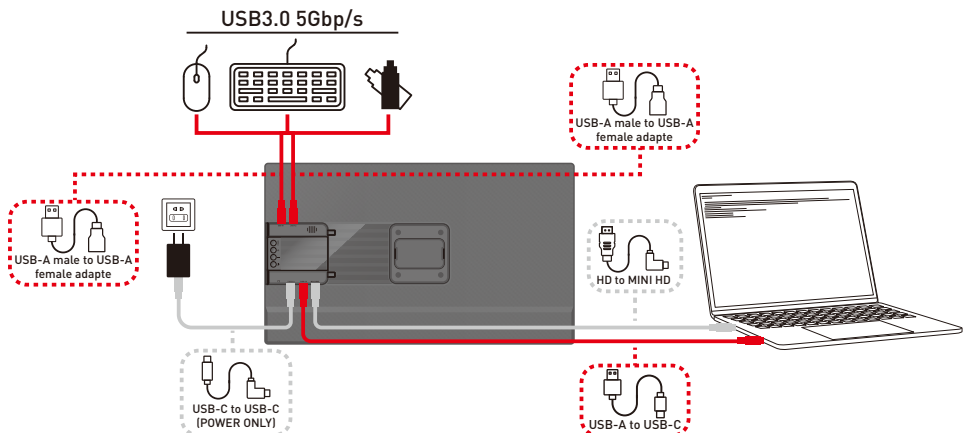
HDMI Port Connection:

If your laptop has an HDMI port, connect the screen using an HDMI-to-Mini HDMI cable. Simultaneously, power the device via the included PD adapter and USB-C to USB-C charging cable.



USB-A Male to USB-A Female Cable Connection:

If your devices such as mouse and hard disk cannot be directly connected to the USB-A interface of the product, please use a USB-A male to USB-A female cable for connection ;



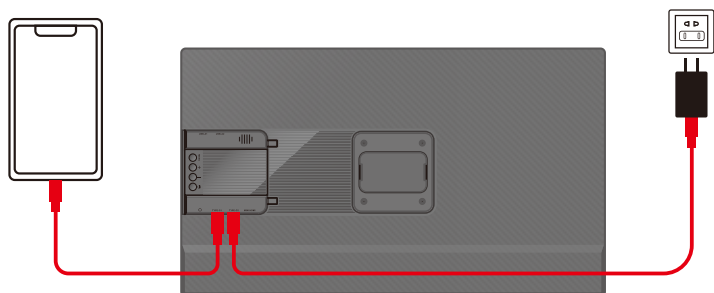
When the product is connected with an HDMI cable, you have to use the USB-A to TYPE-C cable to connect the product TYPE-C interface and the computer USB-A interface, otherwise the USB-A interface of the product [D1 QHD] cannot transmit data.

The product can only function properly when connected to an external adapter of 30W PD or above!

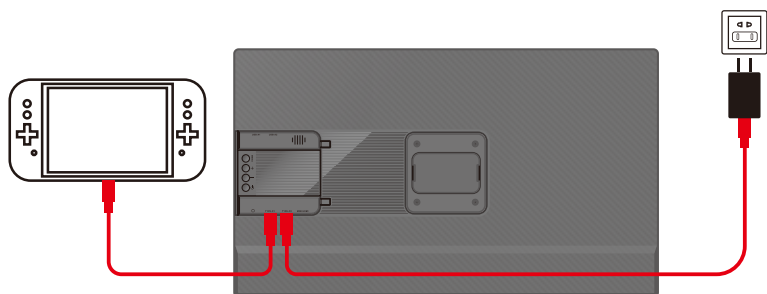
To achieve a slimmer product design, the USB interface clearance has been reduced, which may prevent direct connection of devices such as USB flash drives. Please utilize a USB-A male-to-female extension cable for connectivity.

Connection Mode

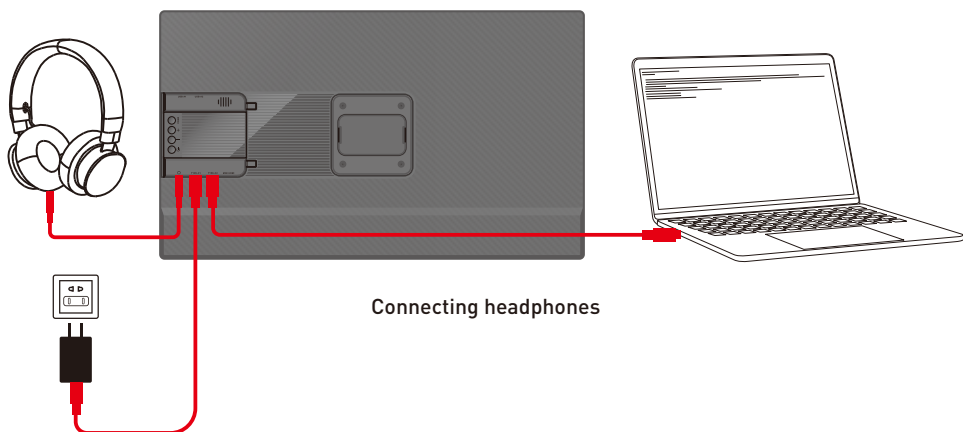
2. Connect D1 QHD with Mobile Phone and Other Devices



Mobile phone
(External power supply required)



Switch
(External power supply required)

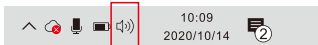


Connecting headphones

Audio Settings

1. Change sound settings of Windows 10 / Windows 11

1.1 Right click the Loudspeaker icon located in the bottom-right corner .

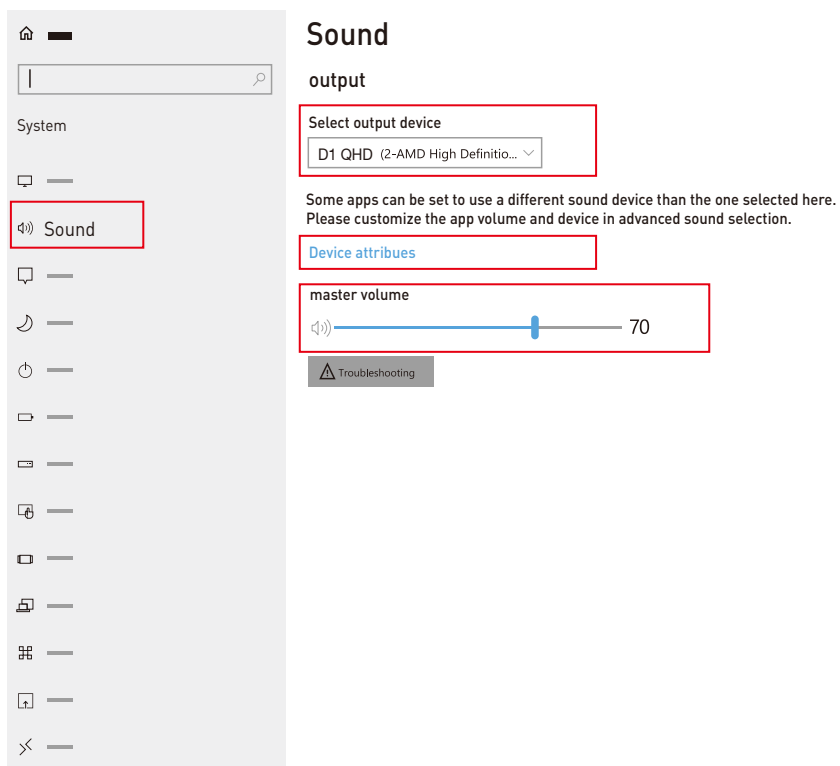


1.2 Select "switch on sound" in pop-up dialog box .

1.3 Left click "turn on sound settings" and pop-up the box as provided .

Here users can set about sound

1. Master volume;
2. Select output device: { D1 QHD / Speaker };
3. Device attributes.



Audio Settings

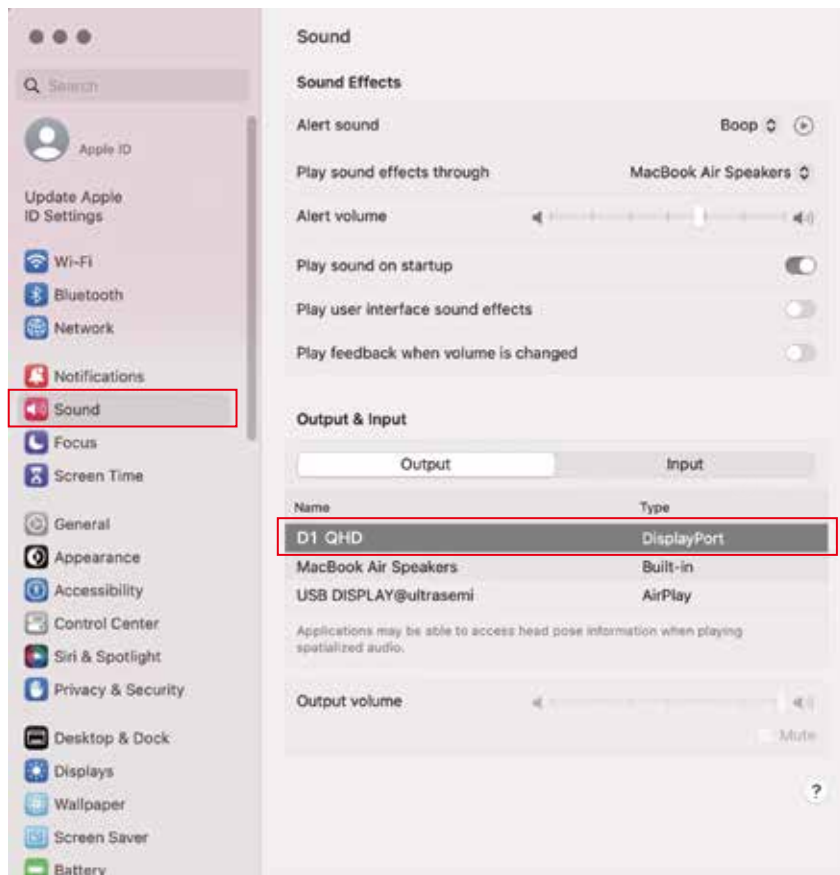
2. Change sound settings of MAC OS PC

2.1. Choose Apple menu > System Settings



2.2. Click on "Output" and then choose the desired device from the list of available sound output options.

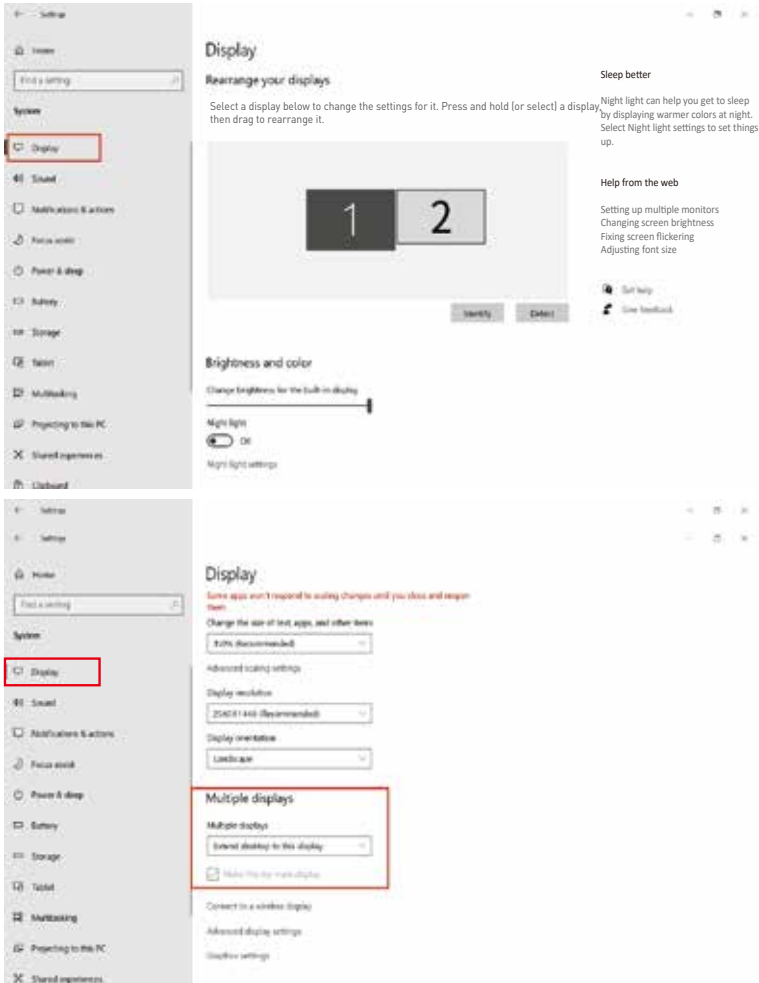
Output devices: (D1 QHD / Speaker)



Display Mode

1. Windows 10 / Windows 11 Display Settings

- 1.1 Right-click a blank area of the desktop. Select "Display Settings" from the pop-up dialogue box. Left-click "Display Settings" to open the settings dialogue box, as shown.



- 1.2 Under the "Rearrange yours displays" section, drag and drop each display to rearrange them according to their physical layout of your desktop. Scroll down to the bottom of the page to further configure the display for extended or mirrored mode.

Display Mode

2. MacOS 13 Ventura Display Settings

2.1 Enter the "System Preferences" menu



2.2 Configure your monitor

In this menu, you can set the resolution and mirror//extend the display you want.



2.3 Arrange Displays

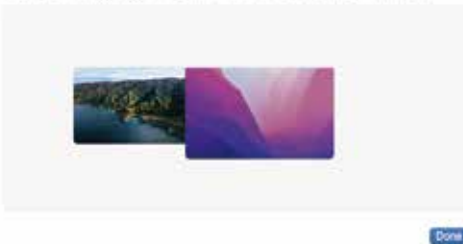
To re-arrange displays, drag them to the desired position.

To mirror displays, hold Option key while dragging them on top of each other.

To relocate the menu bar, drag it to a different display.

Arrange Displays

To rearrange displays, drag them to the desired position. To mirror displays, hold Option while dragging them on top of each other. To relocate the menu bar, drag it to a different display.



Transportation, Storage and Safety Information

To ensure the safe and proper use of this product and to prevent potential accidents such as electric shock or fire, please carefully read and understand all usage requirements and operational procedures before using. Adhere strictly to the following guidelines:

1. Before use, remove the protective film from the screen surface.
2. This product requires a DC power supply through an AC/DC power adapter. Ensure that the adapter is placed away from heat sources in a well-ventilated location. The AC power socket and AC power line should be adequately grounded to handle the current demands.
3. The DC power input required for this product is $5V-20V \pm 2V$.
4. Take precautions to prevent excessive humidity and dust accumulation, as they can lead to circuit corrosion and malfunction.
5. Avoid subjecting the screen surface to external forces or impacts.
6. Do not use sharp tools that may damage the screen surface.
7. This product is suitable for general business and domestic use, and it is recommended to operate it within an ambient temperature range of -20°C to 60°C .
8. Remember to power off the device by disconnecting the power source when not in use.

