

N2 USER'S GUIDE



DUAL SCREEN

————— LAPTOP SCREEN EXTENDER —————

Friendly Reminders:

1. Ensure a secure connection of the Type-C data cable to the device interface.
2. This product seamlessly supports all Type-C functions, including charging and video, through a single integrated cable. In the event of screen power issues or restart difficulties, kindly provide external power of 5V, 2A.

Windows

Mac

Android

Product Introduction

The N2 is a plug-and-play, multifunctional portable single-screen laptop extension screen. It quickly sets up a personal mobile workstation, providing notebook users with a perfect solution for multi-screen mirroring or extended display, significantly improving work efficiency by up to 50%, and supporting efficient multitasking. Additionally, it supports screen mirroring on some smartphones (such as the latest Samsung, Huawei, and iPhone 15 and above), and supports the built-in desktop mode and audio-video transmission functions of smartphones.

The N2 product stand is designed to be simple and easy to use. Simply take out the screen and magnetically attach it to the product stand. The screen supports up and down adjustment and 360-degree rotation. The stand provides secure and stable support for various types of laptops, making it suitable for professionals, office workers, gamers, stock traders, entrepreneurs, programmers, and students, offering them a unique and enjoyable user experience.

The N2 screen can independently adjust brightness, sound, contrast, and other parameters. It is equipped with MINI HDMI/TYPE-C interfaces, allowing for multifunctional video expansion without the need for a docking station. As long as your laptop has a full-function TYPE-C interface, it can be directly connected to the display. Laptops, desktops, mini PCs, set-top boxes, and game consoles with HDMI output interfaces can be directly connected to the display, but the screen requires an external power source (you can use a type-c charging cable).

Finally, once the N2 screen is detached, it can be connected to a single-screen stand for both landscape and portrait display modes. Designed for intuitive operation and seamless setup, it delivers a smooth and enjoyable user experience.

Product Attributes

1. Product host	1
2. Accessories	1
3. Parameters	1

Installation and Storage

1. Expand the monitor	2
2. Open the stand/Install the screen	2
3. Single-screen stand installation	3
4. Display status	3
5.Storage	4

Key Definitions	4
-----------------------	---

Connection Mode

1. Connect N2 with Laptop	5
2. Connect N2 with Mobile Phone or Other Devices with HDMI/ full-featured USB-C ports	5

Audio Settings

1. Change sound settings of Windows 10 / Windows 11	6
2. Change sound settings of MAC OS PC	7

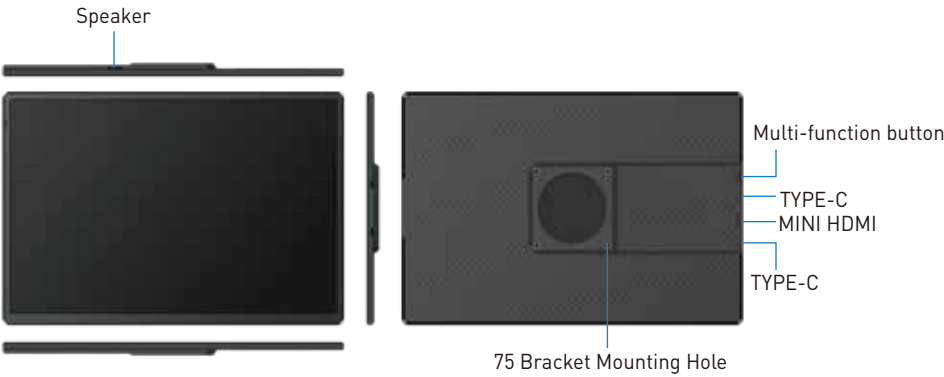
Display Mode

1. Windows 10 / Windows 11 Display Settings	8
2. MacOS 13 Ventura Display Settings	9

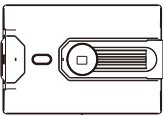
Transportation, Storage and Safety Information	10
--	----

Product Attributes

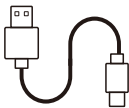
1. Product host



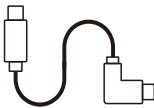
2. Accessories



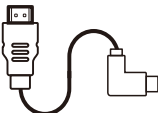
Monitor



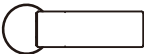
USB-A to USB-C *1



USB-C to USB-C *1



HDMI to MINI HDMI *1



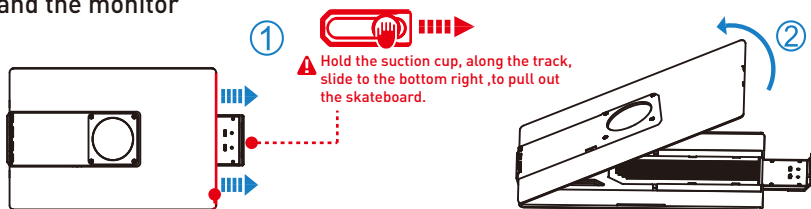
Portable Stand

3. Parameters

Weight:	1.27 Kg	Screen Size:	16 Inches
Aspect Ratio:	16:10	Panel Type:	IPS Wide Viewing Angle
Size:	368x237x29.5mm	Brightness:	300CD/M ²
Refresh Rate:	60Hz	Type-C Input:	5V-20V / 5A Max
Resolution:	1920x1200 P	Type-C Output:	5V-20V / 4.25A Max
Speakers:	1	Ports:	TYPE-C *2+ MINI HDMI

Installation and Storage

1. Expand the monitor



Disassemble the screen here

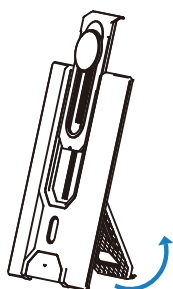
1. You need to pull the skateboard apart to remove the screen.

*Note: Please unfold the screen step by step to avoid damaging it.

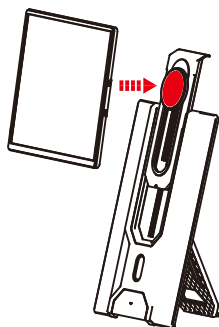


*Note: Hold the suction cup, along the track, slide to the bottom right, to pull out the skateboard.

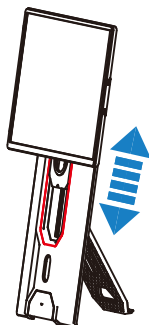
2. Open the stand/Install the screen



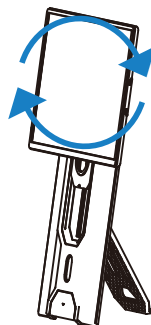
Note: Open the stand (the maximum opening angle of the stand is 90 degrees).



Note: Align the holes to install the screen.

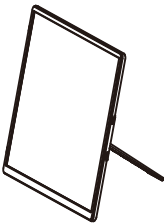
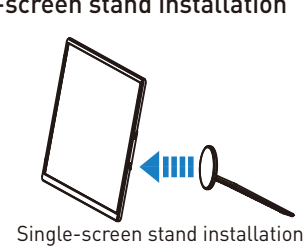


Note: The downward extension travel is 90MM.

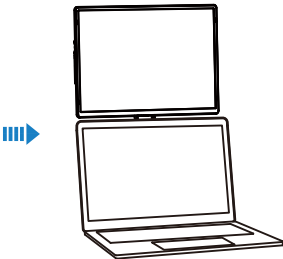
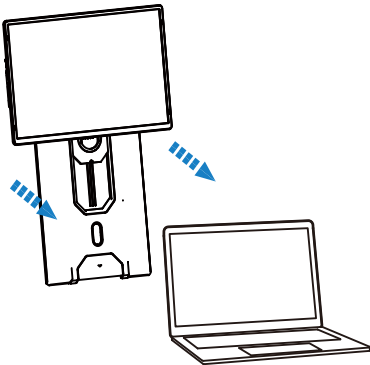
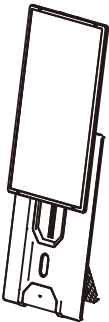
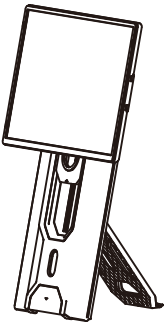
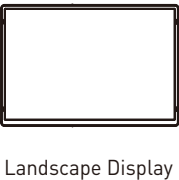


Note: The screen supports 360-degree rotation.

3. Single-screen stand installation

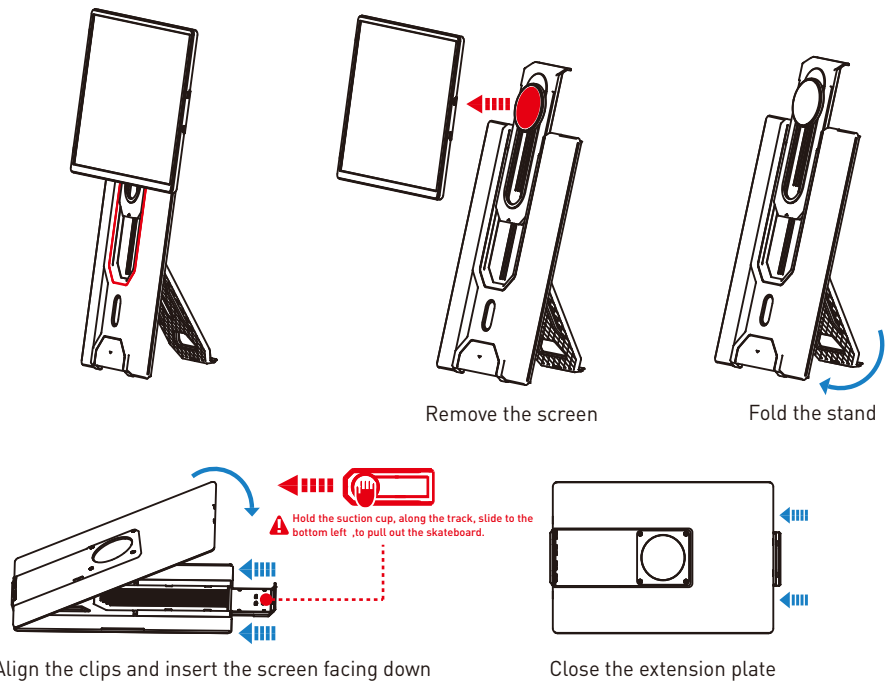


4. Display status

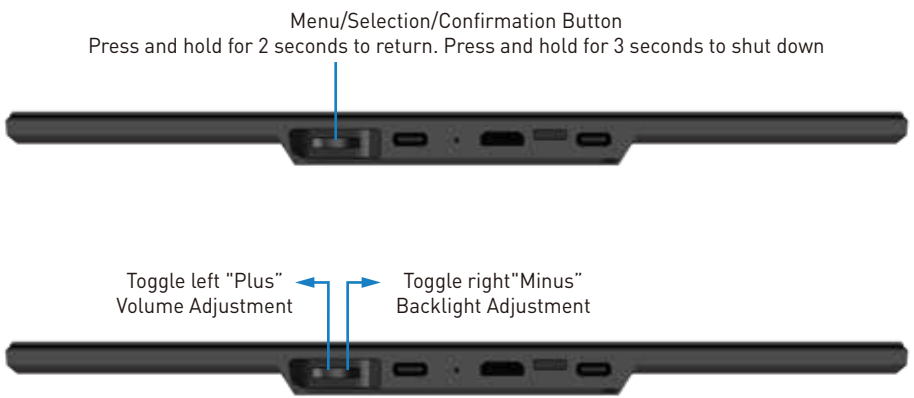


Installation and Storage

5.Storage

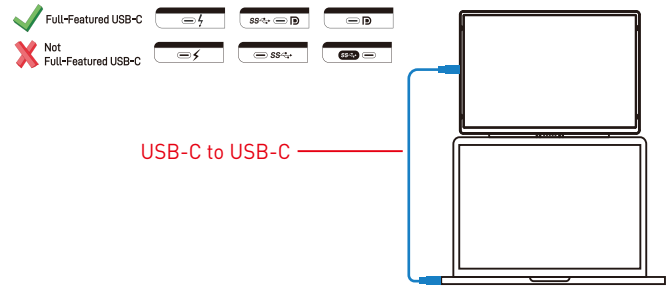


Key Definitions

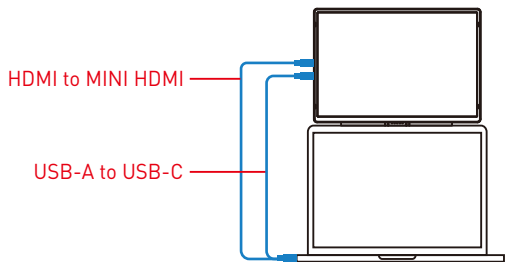


1. Connect N2 with Laptop

TYPE-C Connection:
If your laptop has one full-functioned Type-C port, you can use one USB-C to USB-C cable to connect the product to your laptop. Please connect the cable from the first or second port on the screen extender to the full-functioned Type-C ports of your laptop.



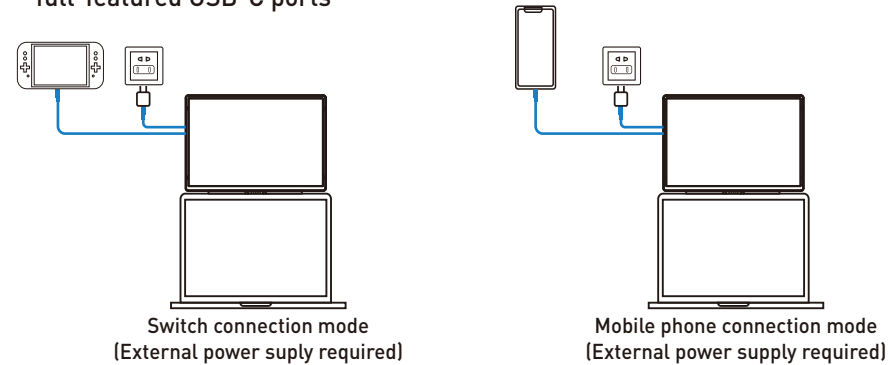
USB and HDMI port Connection:
If your laptop has one USB-A or USB-C port and one HDMI port, please use two cables (one HDMI to MINI HDMI cable + one USB-A or USB-C to USB-C cable) to connect the screen.



Note: The HDMI-to-MINI HDMI cable must be connected to the MINI HDMI port of the video screen extender. The USB-A or USB-C to USB-C cable must be connected to the first or second port for power supply.

Note: If the display has no signal or the signal is unstable after connection, please connect an external 5V/2A power adapter to power the screen extender.

2. Connect N2 with Mobile Phone or Other Devices with HDMI/ full-functioned USB-C ports



1. Change sound settings of Windows 10 / Windows 11

1.1 Right click the loudspeaker icon located in the bottom-right corner.

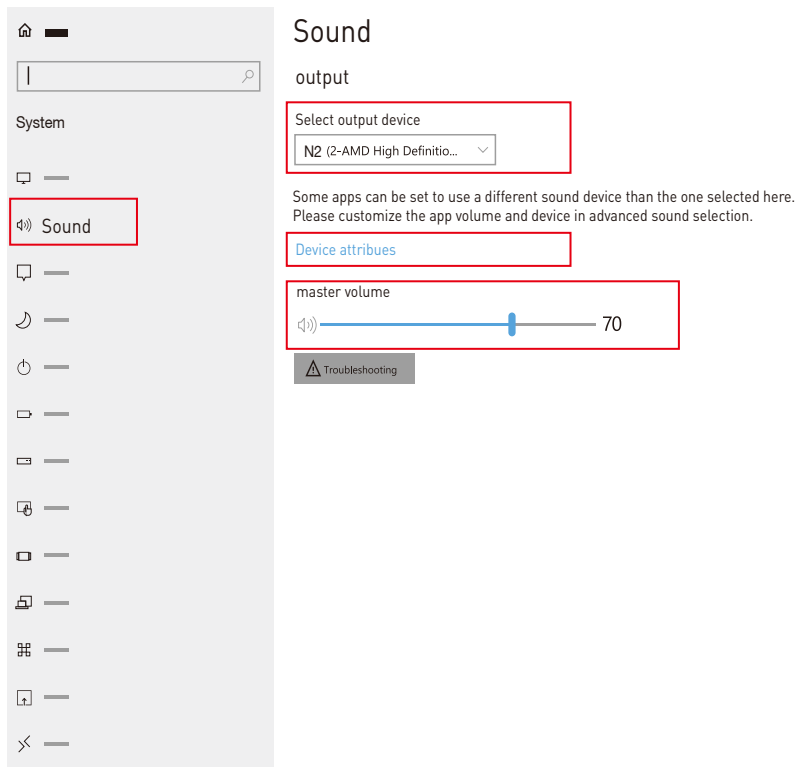


1.2 Select "switch on sound " in pop-up dialog box

1.3 Left click "turn on sound settings" and pop-up the box as provided, here users can set about sound

Here users can set about sound

- 1. Master volume;
- 2. Select output device: { N2 / Speaker };
- 3. Device attributes.

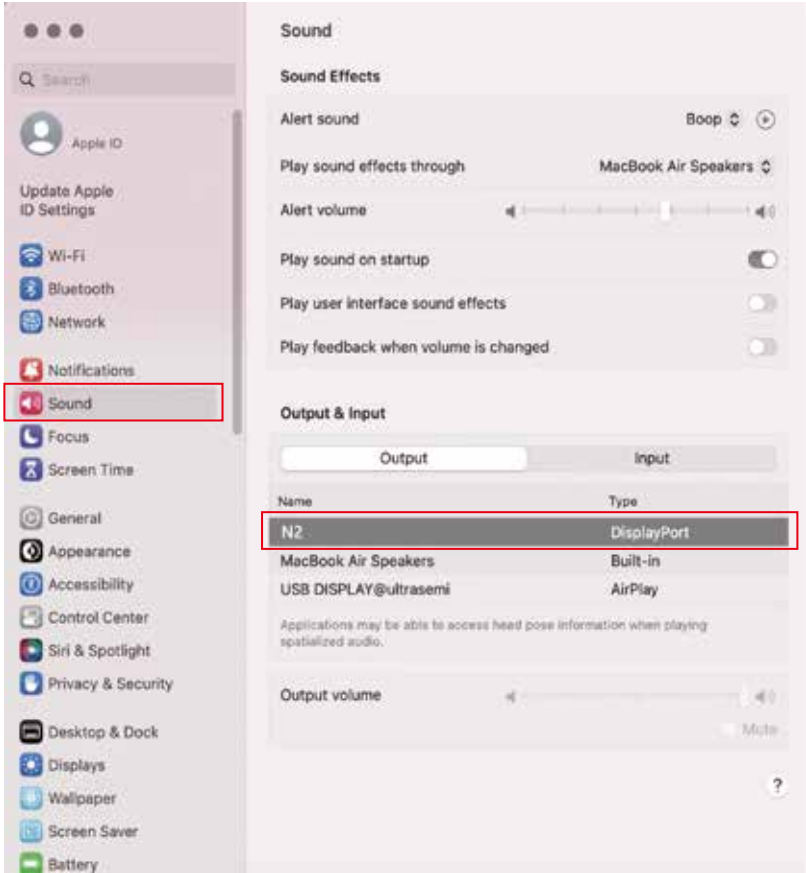


2. Change sound settings of MAC OS PC

2.1. Choose Apple menu > System Settings

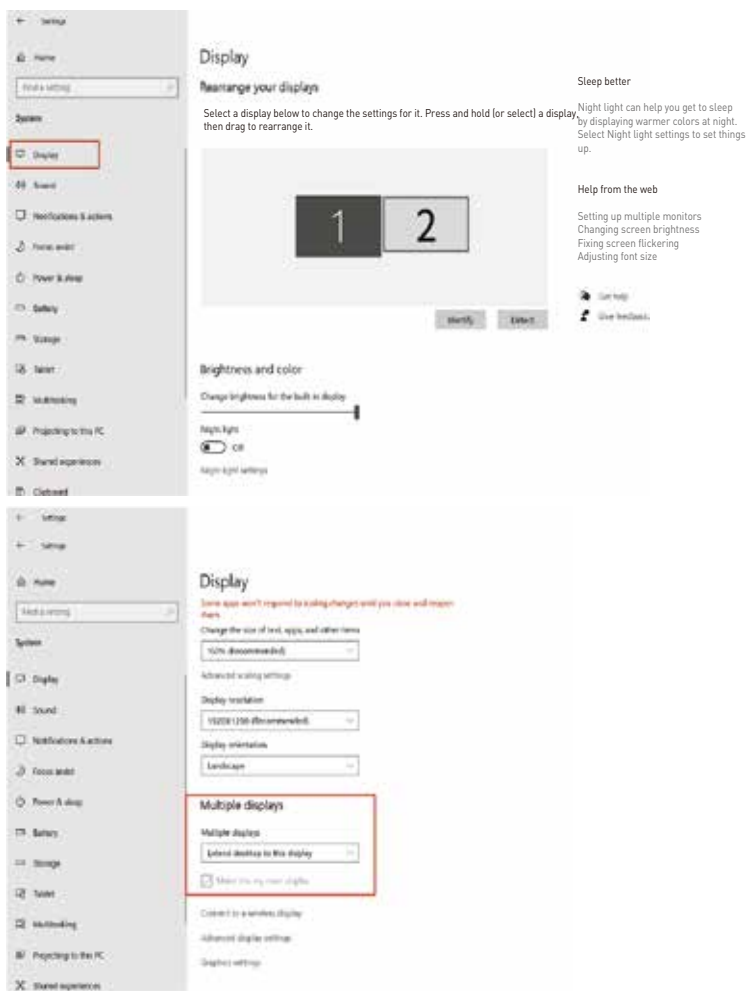


2.2. Click "Output", then select the device you want use for the list of sound output devices: [N2 / Speaker]



1. Windows 10 / Windows 11 Display Settings

- 1.1 Right-click a blank area of the desktop. Select 'Display Settings' from the pop-up dialogue box.
Left click "Display Settings" to open the settings dialogue box, shown in the figure:



- 1.2 Under the "Rearrange displays" section, drag and drop each display to rearrange them according to their physical layout of your desktop. Scroll down to the bottom of the page to further configure the display for extended or mirrored mode.

2. MacOS 13 Ventura Display Settings

2.1 Enter the "System Preferences" menu



2.2 Configure your monitor

In this menu, you can set the resolution and mirror/extend the display you want.



2.3 Arrange Displays

- To rearrange displays, drag them to the desired position.
- To mirror displays, hold Option key while dragging them on top of each other.
- To relocate the menu bar, drag it to a different display.



To ensure the safe and proper usage of this product and to prevent potential accidents such as electric shock or fire, it is essential to thoroughly read and comprehend all usage requirements and operational procedures before utilizing it. Kindly adhere strictly to the following guidelines:

1. Before use, kindly remove the protective film covering the screen surface.
2. The DC power supply required for this product is an AC/DC power adapter. Ensure it is positioned far away from heat sources and placed in a well-ventilated area. The AC power socket and AC power line must be properly grounded and capable of handling the necessary current demand.
3. The DC power input required for this product is 5V-20V±2V.
4. Take care to prevent excessive humidity and dust accumulation to avoid circuit corrosion and potential failures.
5. Avoid subjecting the screen to external forces.
6. Refrain from using sharp tools that may damage the screen.
7. This product is suitable for general business and domestic use, with a recommended ambient temperature ranging from -20°C to 60°C.
8. Remember to power off the device when not in use.

