

# P5 USER'S GUIDE



## DUAL SCREEN

————— LAPTOP SCREEN EXTENDER —————

### Friendly Reminders:

1. Ensure a secure connection of the Type-C data cable to the device interface.
2. This product seamlessly supports all Type-C functions, including charging and video, through a single integrated cable. In the event of screen power issues or restart difficulties, kindly provide external power of 5V, 2A.
3. When using the DP interface to connect the product, please use the HDMI To TYPE-C data cable included in the package and ensure external power is supplied.

Windows

Mac

Android



# Product Introduction

---

P5 is a versatile plug-and-play one screen laptop monitor that's not only portable and foldable but also a quick ticket to your own on-the-go mobile studio. It's the perfect solution for laptop users looking for multi-screen sync or separate displays, boosting your work efficiency by up to 50% for some serious multitasking mojo. It's got the chops to sync up with models from Samsung, Huawei, and more. Plus, it's game for smartphone system computer mode, audio/video transmission—you name it.

The P5 bracket is simple to use. Place it on your desk and position it flush against your laptop screen, or alternatively, install the magnetic hooks and mount it to your computer monitor. It's got your back for laptops ranging from 13 to 17.3 inches, with adjustable angles for different situations. So whether you're a pro, an office whiz, a gamer, an entrepreneur, a coder, a student, or a stock trader, it's all about tailoring your entertainment experience.

And the P5 screen It's the boss. Independently tweak brightness, sound, contrast—it's your show. With HDMI/Type-C interfaces, you're in for versatile video and data expansion without the hassle of a docking station. If your Type-C laptop packs both signal and power punch, seamless connection and display are yours. Desktops, laptops, mini PCs, set-top boxes, gaming consoles with HDMI outputs—they can all directly link up with this display. Just keep in mind, the screen needs a little external power boost to shine (cue the custom HDMI To TYPE-C cable connecting the product to your computer).

Last but not least, the P5 screen splitter is the cherry on top. With a complete 180-degree rotation on a single screen, you're in control of your viewing experience. Choose your preferred angle and immerse yourself in the ultimate visual feast.

---

# Contents of Instruction

---

## Product Attributes

1. Product host .....	1
2. Accessories .....	1
3. Parameters .....	1

## Installation and Storage

1. Expand the monitor .....	2
2. Main Support Installation .....	2
3. Screen Stand Installation .....	2
4. Stretch the frame .....	2
5. Adjust the stand .....	3
6. Opening Screen .....	4
7. Closing Sequence .....	4

Key Definitions .....	4
-----------------------	---

## Connection Mode

1. Connect P5 with Laptop .....	5
2. Connect P5 with Mobile Phone with Other Devices .....	5

## Audio Settings

1. Change sound settings of Windows 10 / Windows 11 .....	6
2. Change sound settings of MAC OS PC .....	7

## Display Mode

1. Windows 10 / Windows 11 Display Settings .....	8
2. MacOS 13 Ventura Display Settings .....	9

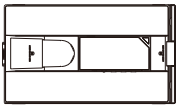
Transportation, Storage and Safety Information .....	10
--	----

# Product Attributes

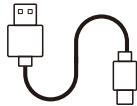
## 1. Product host



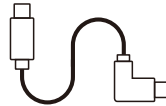
## 2. Accessories



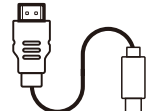
Monitor



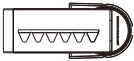
USB-A to USB-C \*1



USB-C to USB-C \*1



HDMI to TYPE-C \*1



Portable Stand



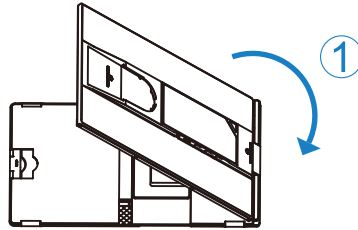
magnetic hanger \*2

## 3. Parameters

Weight:	1.3 Kg	Screen Size:	15.6 Inches
Aspect Ratio:	16:9	Panel Type:	IPS Wide Viewing Angle
Size:	365x210x24.8mm	Brightness:	300CD/M <sup>2</sup>
Refresh Rate:	60Hz	Type-C Input:	5V-20V / 5A Max
Resolution:	1920x1080 P	Type-C Output:	5V-20V / 4.25A Max
Speakers:	1	Ports:	Type-C x3+AUX 3.5

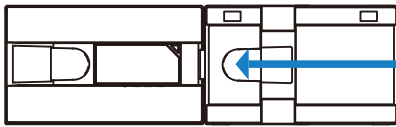
# Installation and Storage

## 1. Expand the monitor

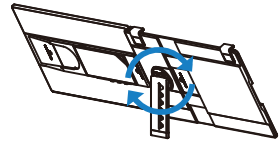


\*Note: Please expand the monitors in order to avoid damage.

## 2. Main Support Installation




Install small support

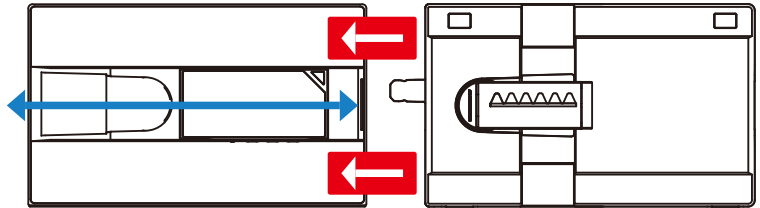


Support 360° rotation

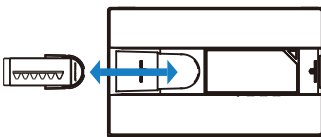
## 3. Screen Stand Installation

①  
Insert here for laptops  
smaller than 15.6 inches.   
**▲ Recommended for  
storage when not in use.**

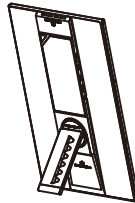
②  
Insert here for laptops  
larger than 15.6 inches. 



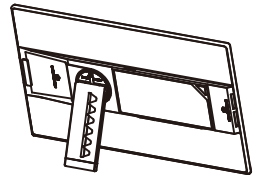
Note: Hold both red arrow positions with both hands and pull the screen outwards to remove the single screen for use.



Install single screen support

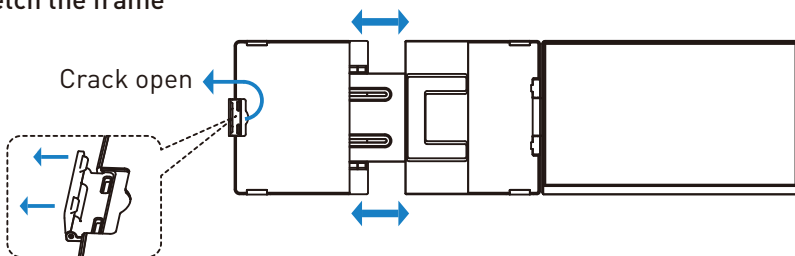


Single screen vertical display



Single screen horizontal display

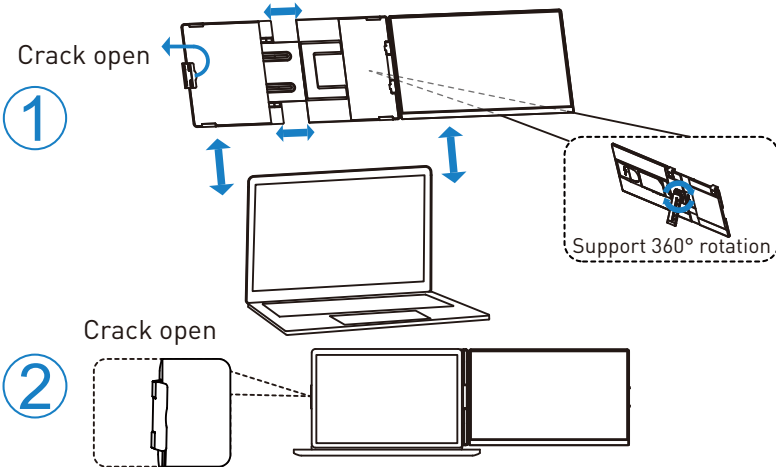
## 4. Stretch the frame



# Installation and Storage

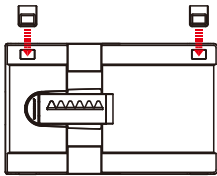
## 5. Adjust the stand

Scenario 1: If you need to use a laptop screen extender stand on a flat table, follow the installation diagram below.

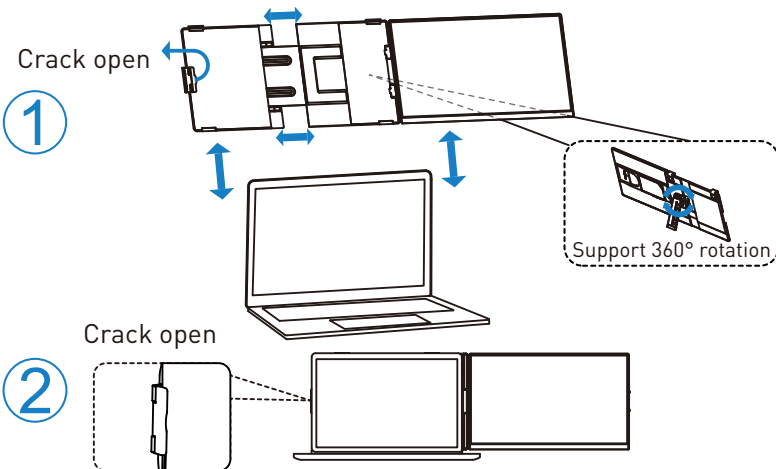


\*Note: Open the stand, adjust it to the appropriate supporting angle, place it behind the computerscreen, and complete the installation of the dual-screen support.

Scenario 2: If you need to use the bracket mounted on your computer monitor, secure it to the screen.



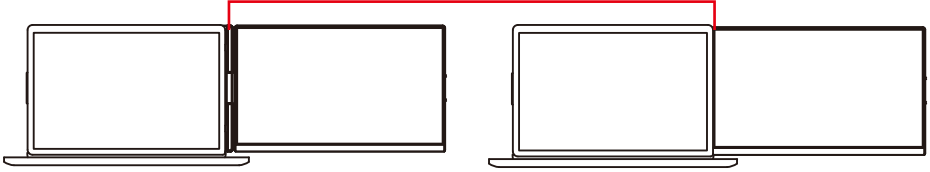
Scenario 1: If mounting the bracket of the screen extender onto the laptop is required, proceed with the installation of the magnetic hooks.  
Scenario 2: If you are using a laptop screen extender on a flat desk but do not need the split-screen stand to hang from the screen, do not install the magnetic hook.



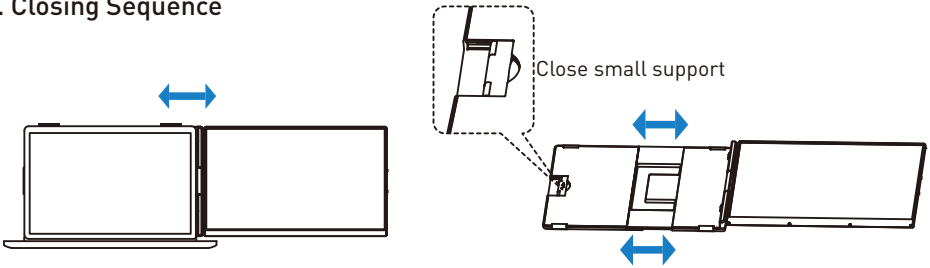
# Installation and Storage

## 6. Opening Screen

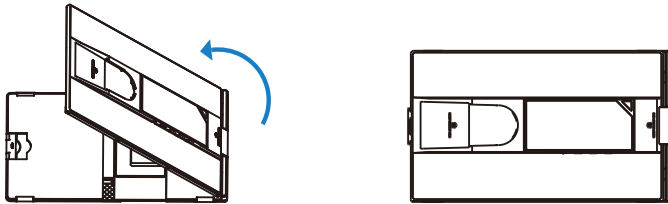
Note: Adjust the gap between the portable screen and the computer screen according to your needs for a better experience.



## 7. Closing Sequence



Note: Please follow the sequence of opening and closing to avoid damage of the device.



Note: Store the screens in order to avoid damaging the equipment!

## Key Definitions

Menu/Selection/Confirmation Button

Press and hold for 2 seconds to return. Press and hold for 3 seconds to shut down



Toggle right "Plus"  
Volume Adjustment

Toggle left "Minus"  
Backlight Adjustment

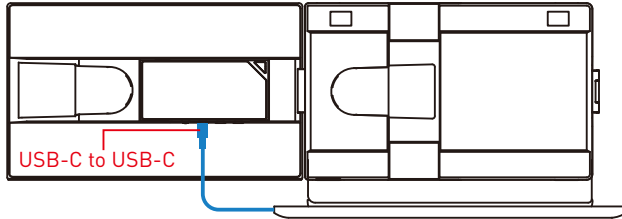


# Connection Mode

## 1. Connect P5 with Laptop

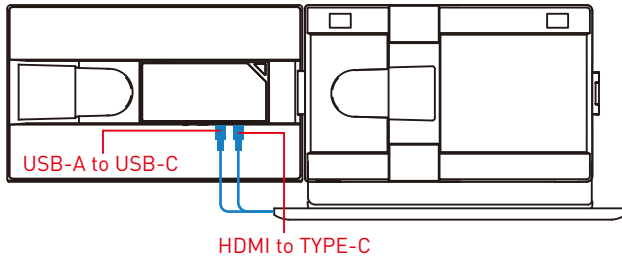
### TYPE-C Connection:

If your laptop has one full-functioned Type-C port, you can use one USB-C to USB-C cable to connect the product to your laptop. Please connect the cable from the first or second port on the screen extender to the full-functioned Type-C ports of your laptop.



### USB and HDMI port Connection:

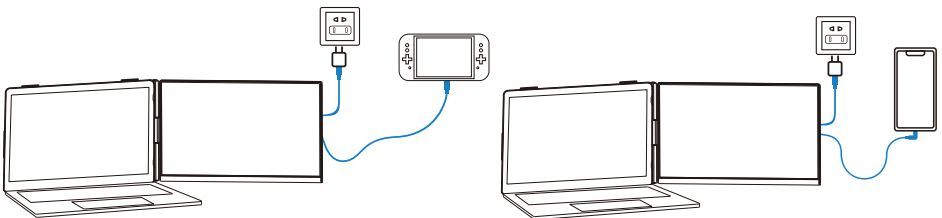
If your laptop has one USB-A or USB-C port and one HDMI port, please use two cables (one HDMI to TYPE-C cable + one USB-A or USB-C to USB-C cable) to connect the screen.



**Note:** The HDMI to TYPE-C cable must be connected to the third port of the screen extender for video, and the USB-A or USB-C to USB-C cable must be connected to the first or second port for power supply.

**Notide:** If the display has no signal or the signal is unstable after connection, please connect an external 5V/2A power adapter to power the screen extender.

## 2. Connect P5 with Mobile Phone with Other Devices



Switch connection mode  
(External power supply required)

Mobile phone connection mode  
(External power supply required)

# Audio Settings

---

## 1. Change sound settings of Windows 10 / Windows 11

1.1 Right click the loudspeaker icon located in the bottom-right corner.

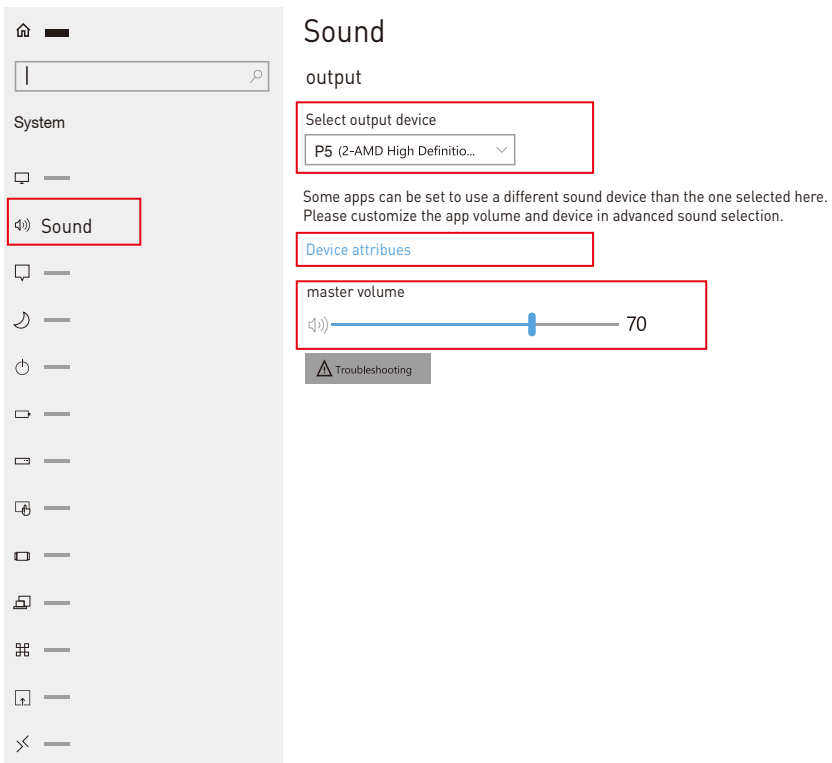


1.2 Select "switch on sound " in pop-up dialog box

1.3 Left click "turn on sound settings" and pop-up the box as provided, here users can set about sound

### Here users can set about sound

1. Master volume;
2. Select output device: { P5 / Speaker };
3. Device attributes.



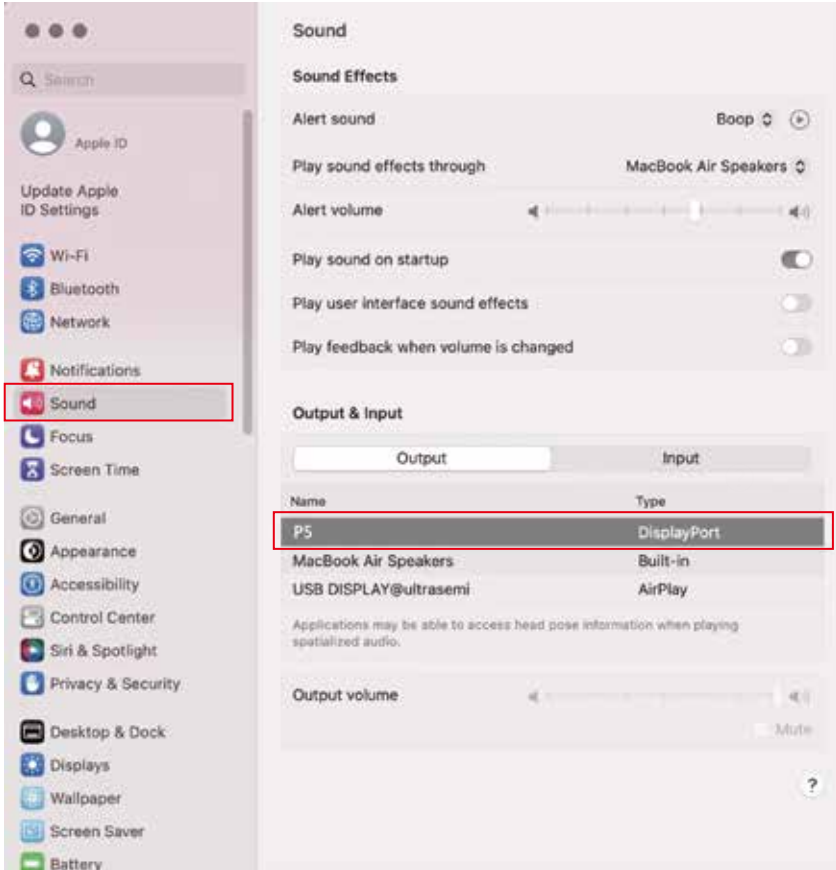
# Audio Settings

## 2. Change sound settings of MAC OS PC

2.1. Choose Apple menu > System Settings



2.2. Click "Output", then select the device you want use for the list of sound output devices: ( P5 / Speaker )

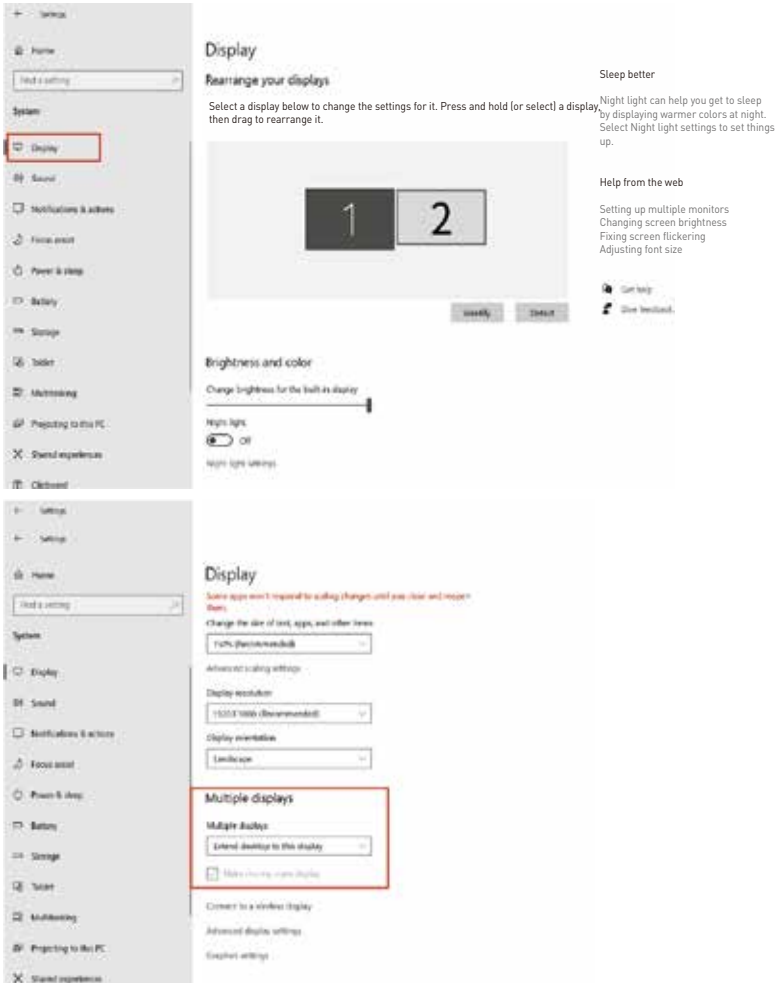


# Display Mode

## 1. Windows 10 / Windows 11 Display Settings

1.1 Right-click a blank area of the desktop. Select 'Display Settings' from the pop-up dialogue box.

Left click "Display Settings" to open the settings dialogue box, shown in the figure:



1.2 Under the "Rearrange displays" section, drag and drop each display to rearrange them according to their physical layout of your desktop. Scroll down to the bottom of the page to further configure the display for extended or mirrored mode.

# Display Mode

## 2. MacOS 13 Ventura Display Settings

2.1 Enter the "System Preferences" menu



2.2 Configure your monitor

In this menu, you can set the resolution and mirror/extend the display you want.



2.3 Arrange Displays

To rearrange displays, drag them to the desired position.

To mirror displays, hold Option key while dragging them on top of each other.

To relocate the menu bar, drag it to a different display.

### Arrange Displays

To rearrange displays, drag them to the desired position. To mirror displays, hold Option while dragging them on top of each other. To relocate the menu bar, drag it to a different display.



## Transportation, Storage And Safety Information

---

To ensure the safe and proper usage of this product and to prevent potential accidents such as electric shock or fire, it is essential to thoroughly read and comprehend all usage requirements and operational procedures before utilizing it. Kindly adhere strictly to the following guidelines:

1. Before use, kindly remove the protective film covering the screen surface.
2. The DC power supply required for this product is an AC/DC power adapter. Ensure it is positioned far away from heat sources and placed in a well-ventilated area. The AC power socket and AC power line must be properly grounded and capable of handling the necessary current demand.
3. The DC power input required for this product is  $5V-20V\pm 2V$ .
4. Take care to prevent excessive humidity and dust accumulation to avoid circuit corrosion and potential failures.
5. Avoid subjecting the screen to external forces.
6. Refrain from using sharp tools that may damage the screen.
7. This product is suitable for general business and domestic use, with a recommended ambient temperature ranging from  $-20^{\circ}\text{C}$  to  $60^{\circ}\text{C}$ .
8. Remember to power off the device when not in use.



