

S6 USER GUIDE



TRIPLE SCREEN

————— LAPTOP SCREEN EXTENDER —————

Warm tips:

1. Please ensure type-c data wire is connected well with device interface.
2. This product supports whole function of type-c (charging and video), integrated one line. If screen cannot be powered on or restarted, please supply external power of 5V, 2A.
3. The PD interface used to connect the product must use the HDMI TO TYPE-C data cable in the package and be externally powered.

Windows

Mac

Android

Product Introduction

S6 is a multi-function plug and play dual-screen laptop monitor that is portable, foldable. It can help quickly build a personal mobile studio. Provide a perfect solution for laptop users with multi-screen synchronous display and multi screen separate display, which can improve your work efficiency by up to 50% and achieve efficient multi-tasking. It supports the same screen display of some models of Samsung, Huawei and others. It also supports the computer mode of the smart phone system as well as audio and video transmission, etc.

S6 holder is easy to use. Clamp the holder to the top of the computer screen, and it can be easily fixed without falling off. It can support the case of laptop from 13 inches to 17.3 inches, and can be removed and used as a single screen. The screen has its own support that can be adjusted for different angles, providing different fun experience for professionals, office workers, gamers, stock traders, entrepreneurs, programmers and students.

The S6 screen can independently adjust parameters such as brightness, sound, and contrast. It is equipped with Type-C interfaces, allowing for versatile video and data expansion without the need for a docking station. As long as it is a Type-C laptop with combined signal and power capabilities, you can achieve a seamless connection and display. Devices such as desktop computers, laptops, miniPCs, set-top boxes, and gaming consoles with HDMI output interfaces can directly connect to the display. However, the screen needs to be powered externally in order to light up (using the custom HDMI TO TYPE-C cable to connect the product to the computer).

Finally, S6 screen splitter can provide a complete 235 ° rotation on a single screen. You can choose your best view angle for the optimum visual experience.

Contents of Instruction

Product Attributes

1. Product host	1
2. Accessories	1
3. Parameters	1

Installation and Storage

1. Stand Installation	2
2. Screen Installation	2
3. Single Screen Stand Installation	3
4. Multiple Combinations of Screens and Stands	3
5. Storage	7

Key Definitions	8
------------------------------	----------

Connection Mode

1. Connect S6 with Laptop	9
2. Device power supply connection mode	9

Audio Settings

1. Change sound settings of Windows 10 / Windows 11	10
2. Change sound settings of MAC OS PC	11

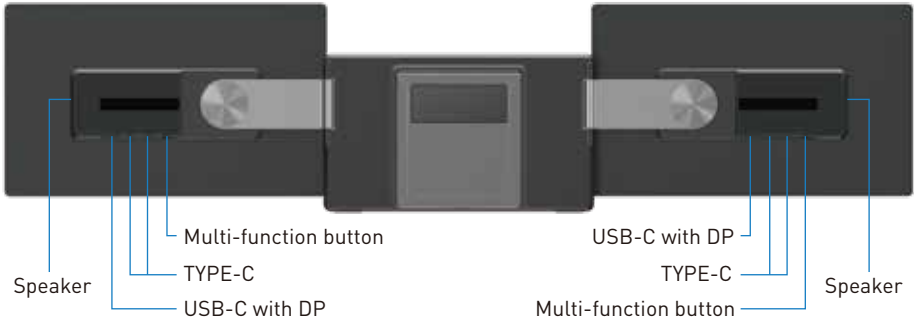
Display Mode

1. Windows 10 / Windows 11 Display Settings	12
2. MacOS 13 Ventura Display Settings	13

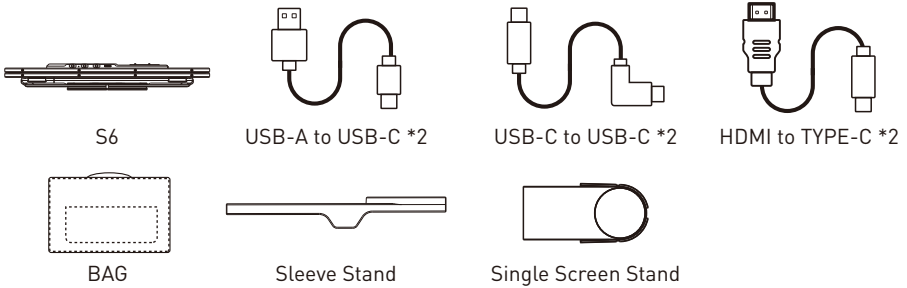
Transportation, Storage and Safety Information	14
---	-----------

Product Attributes

1. Product host



2. Accessories



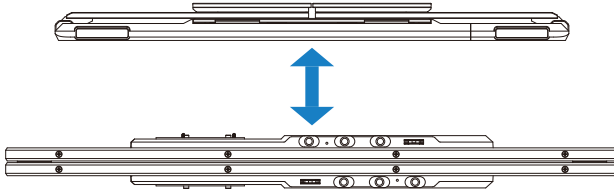
3. Parameters

Weight:	2.39 Kg	Screen Size:	15.6 Inches
Aspect Ratio:	16:9	Panel Type:	IPS Wide Viewing Angle
Size:	360.7x216.6x45mm	Average Brightness:	300CD/M ²
Refresh Rate:	60Hz	Type-C Input:	5V-20V / 5A Max
Resolution:	1920x1080 P	Type-C Output:	5V-20V / 4.25A Max
Speakers:	2	Ports:	TYPE-C*2+USB C with DP

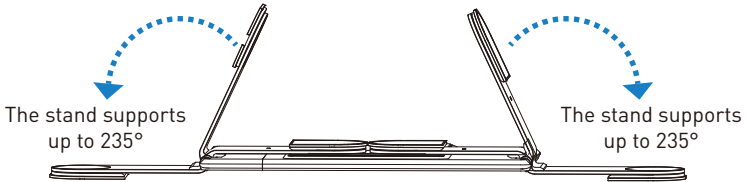
Installation and Storage

1. Stand Installation

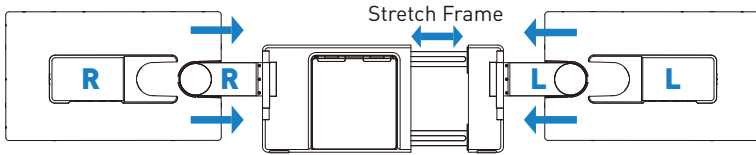
Step1: Separate the screen from the stand.



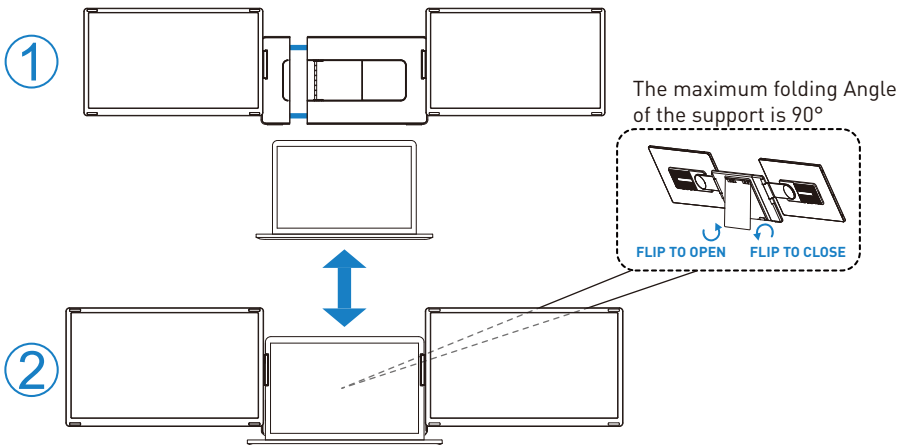
Step2: Expand the stand.



2. Screen Installation



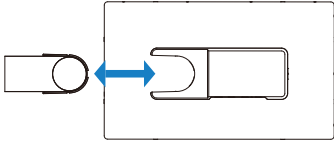
Assemble the screen stand
(Reference to left and right screen labels)



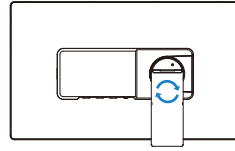
*Note: Open the stand, adjust it to the appropriate supporting angle, place it behind the computer screen, and complete the installation of the dual-screen support.

Installation and Storage

3. Single Screen Stand Installation



Install the single screen stand.

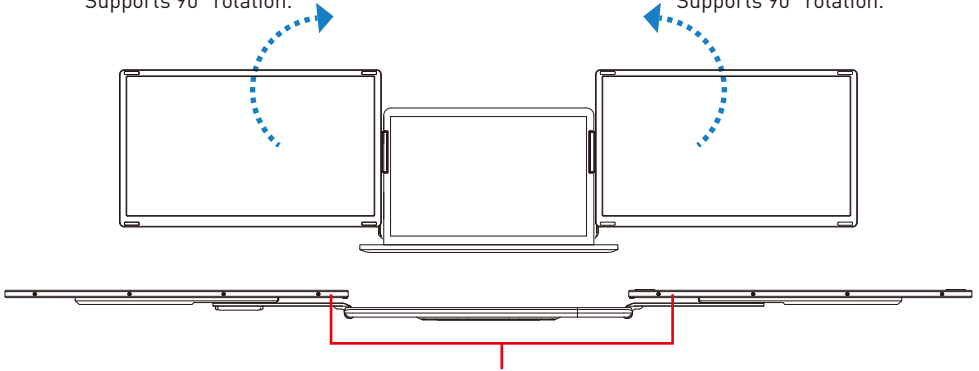


The single screen stand supports 360° rotation.

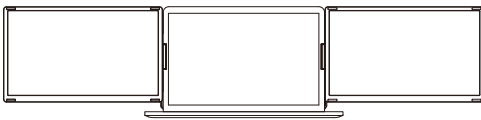
4. Multiple Combinations of Screens and Stands

Supports 90° rotation.

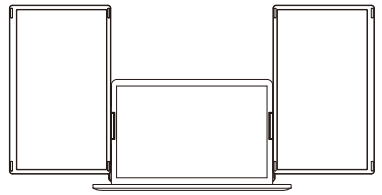
Supports 90° rotation.



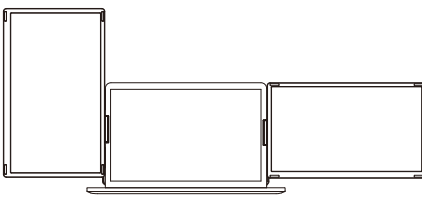
When rotating the screen, the screen and the stand must be parallel to avoid scratching.



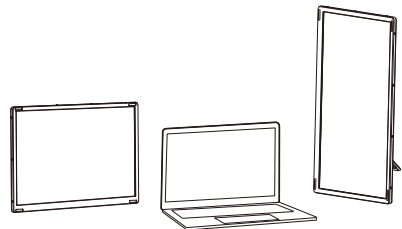
Landscape Display



Portrait Display



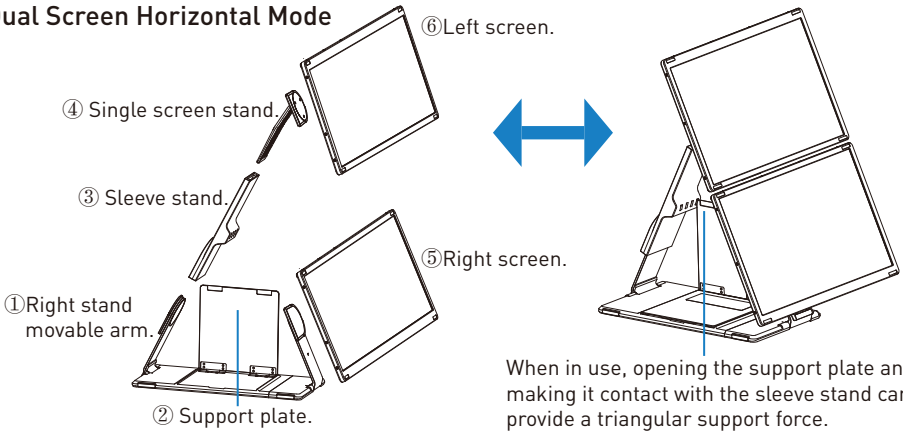
Portrait & Landscape Display



Detached Display

Installation and Storage

Dual Screen Horizontal Mode

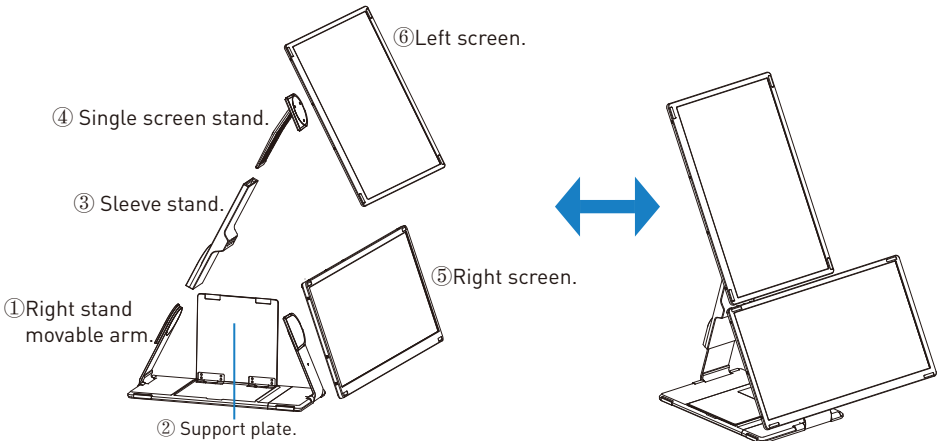


When in use, opening the support plate and making it contact with the sleeve stand can provide a triangular support force.

- ①: Open the movable arms of the left and right stands.
- ②: Open the support plate.
- ③: Install the sleeve stand into the right stand's movable arm.
- ④: Install the single screen stand into the sleeve stand.
- ⑤: Install the right screen into the L screen stand's movable arm (for horizontal display).
- ⑥: Install the left screen into the single screen stand, rotate 180° to complete the installation.

*Note: When connecting to the computer, the left screen needs to be flipped horizontally by 180° in the display settings.

Dual Screen Horizontal and Vertical Mode

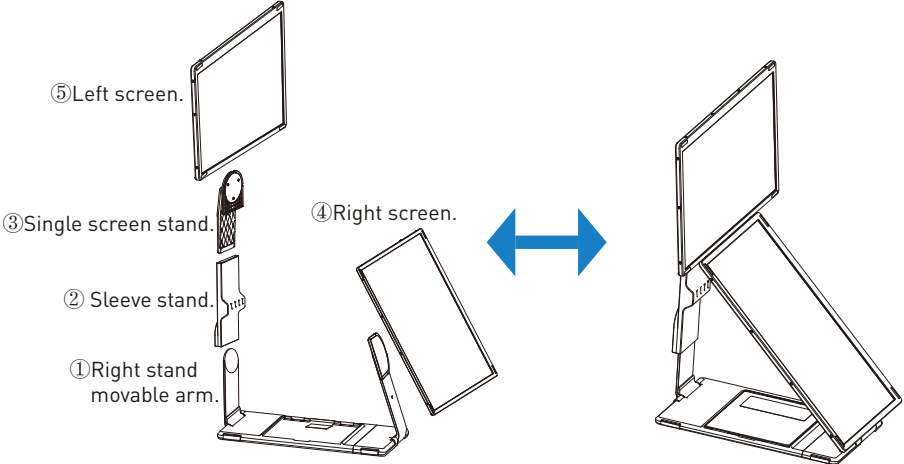


- ①: Open the movable arms of the left and right stands.
- ②: Open the support plate.
- ③: Install the sleeve stand into the right stand's movable arm.
- ④: Install the single screen stand into the sleeve stand.
- ⑤: Install the right screen into the L screen stand's movable arm (for horizontal display).
- ⑥: Install the left screen into the single screen stand, rotate 90° to complete the installation.

*Note: When connecting to the computer, the left screen needs to be rotated horizontally by 90° in the display settings.

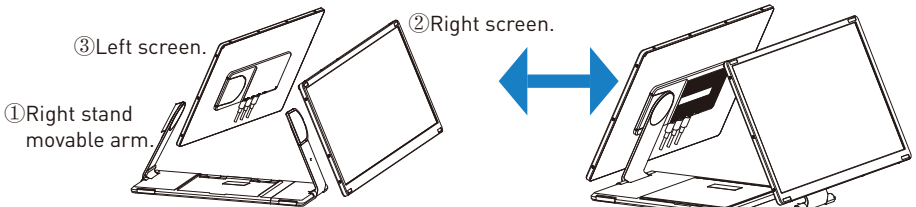
Installation and Storage

Dual Screen Horizontal and Vertical Mode



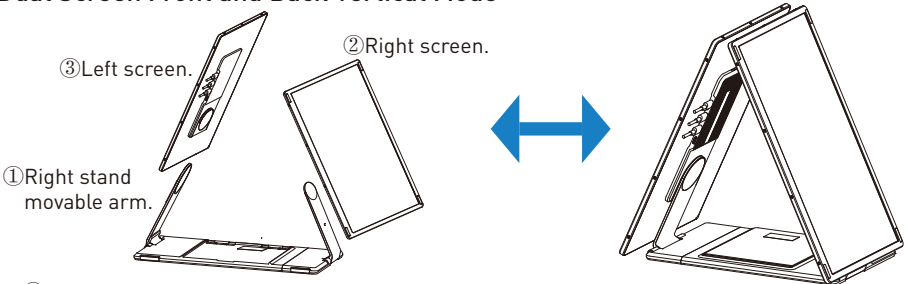
- ①: Open the movable arms of the left and right stands.
- ②: Install the sleeve stand into the right stand's movable arm.
- ③: Install the single screen stand into the sleeve stand.
- ④: Install the right screen into the L screen stand's movable arm (for vertical display).
- ⑤: Install the left screen into the single screen stand, rotate 180° to complete the installation.

Dual Screen Front and Back Horizontal Mode



- ①: Open the movable arms of the left and right stands.
- ②: Install the right screen into the L screen stand's movable arm (for horizontal display).
- ③: Install the left screen into the R screen stand's movable arm to complete the installation.

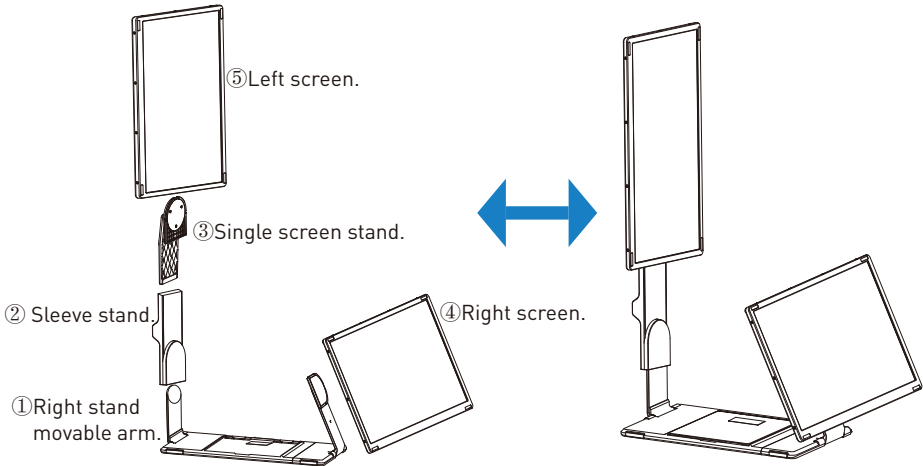
Dual Screen Front and Back Vertical Mode



- ①: Open the movable arms of the left and right stands.
- ②: Install the right screen into the L screen stand's movable arm (for vertical display).
- ③: Install the left screen into the R screen stand's movable arm to complete the installation.

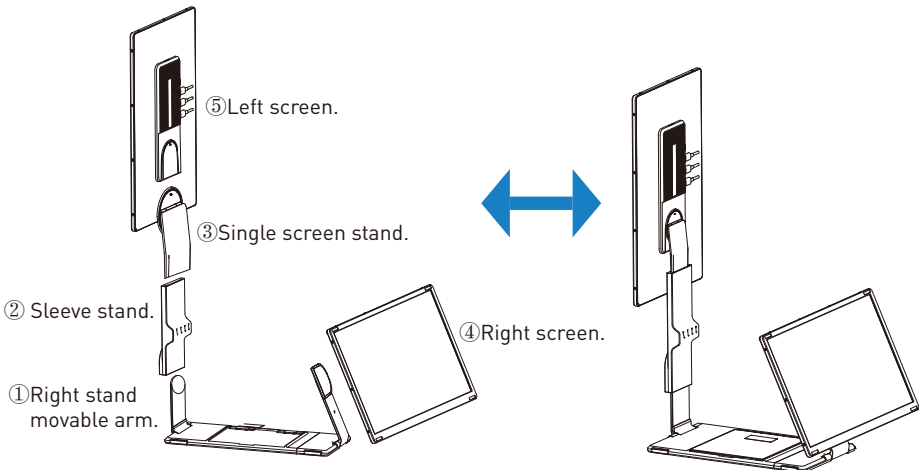
Installation and Storage

Dual Screen Horizontal and Vertical Mode



- ①: Open the movable arms of the left and right stands.
- ②: Install the sleeve stand into the right stand's movable arm.
- ③: Install the single screen stand into the sleeve stand.
- ④: Install the right screen into the L screen stand's movable arm (for horizontal display).
- ⑤: Install the left screen into the single screen stand, rotate 90° to complete the installation.

Dual Screen Front and Back Horizontal and Vertical Mode



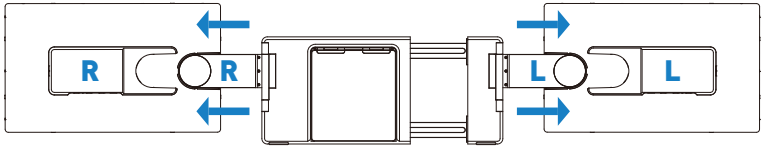
- ①: Open the movable arms of the left and right stands.
- ②: Install the sleeve stand into the right stand's movable arm.
- ③: Install the single screen stand into the sleeve stand.
- ④: Install the right screen into the L screen stand's movable arm (for horizontal display).
- ⑤: Install the left screen into the single screen stand, rotate 90° to complete the installation.

More stand combination modes and ways of use await your exploration.

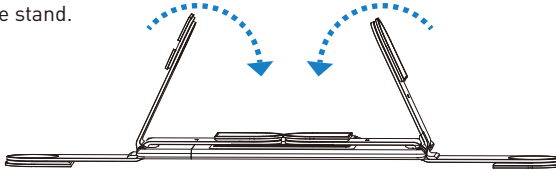
Installation and Storage

5.Storage

Step1: Remove the left and right screens.

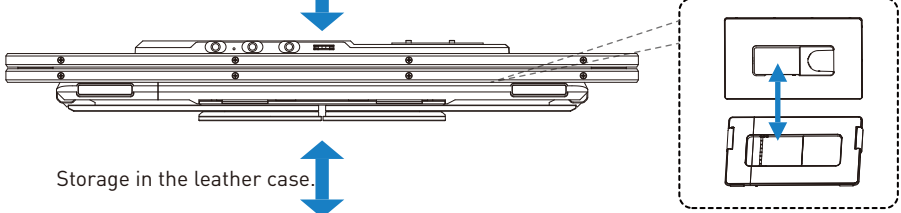
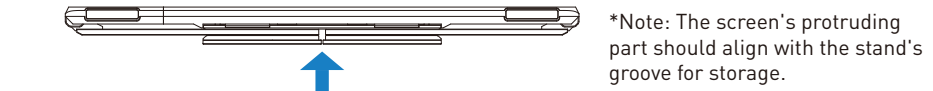
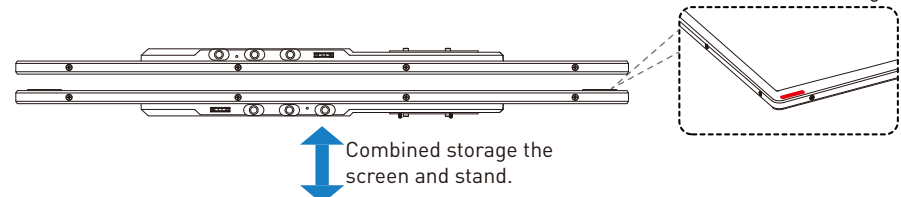


Step2: Fold up the stand.

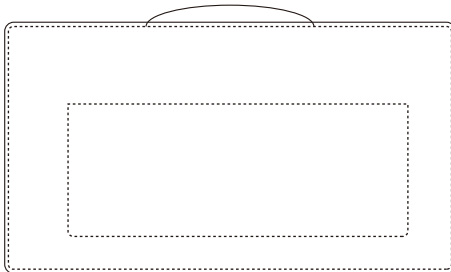


Step3: Combined storage the screen and stand

*Note: The right screen's silicone should align with the left screen's limit hole for combined storage.



Storage in the leather case.



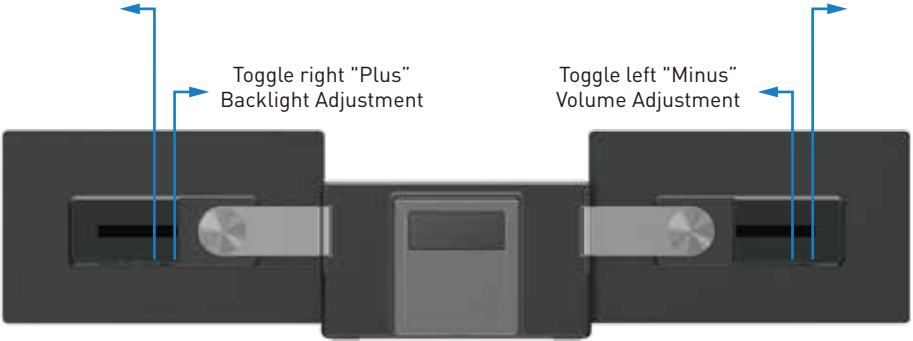
Key Definitions

Menu/Selection/Confirmation Button
Press and hold for 2 seconds to return. Press and hold for 3 seconds to shut down



Toggle left "Minus"
Volume Adjustment

Toggle right "Plus"
Backlight Adjustment

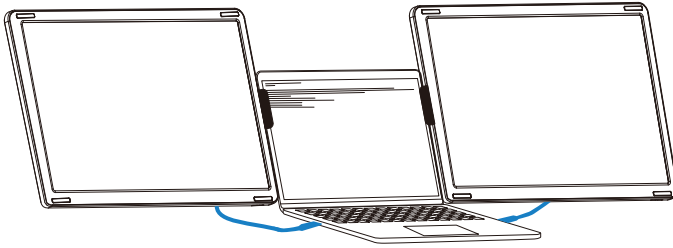


Connection Mode

1. Connect S6 with Laptop

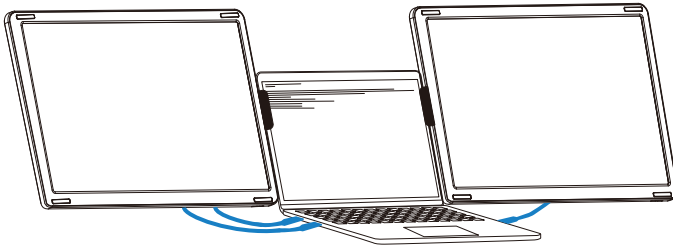
TYPE-C Connection:

If your laptop has two full-featured Type-C ports, you can connect the S6 directly to your laptop with two Type-C cables.



TYPE-C & HDMI & USB-A Connection:

If your laptop has one full-featured Type-C port, one USB-A port and one HDMI port, please first connect one screen using the USB-C cable. Then connect the other screen using the USB-A to USB-C cable and the HDMI to Type-C cable.



Notice:

If the display has no signal or the signal is unstable after connection, please connect an external 5V/2A power adapter to power the laptop

2. Connect S6 with Mobile Phone with Other Devices



Switch connection mode
(External power supply required)

Mobile phone connection mode
(External power supply required)

Audio Settings

1. Change sound settings of Windows 10 / Windows 11

1.1 Right click the loudspeaker icon located in the bottom-right corner.

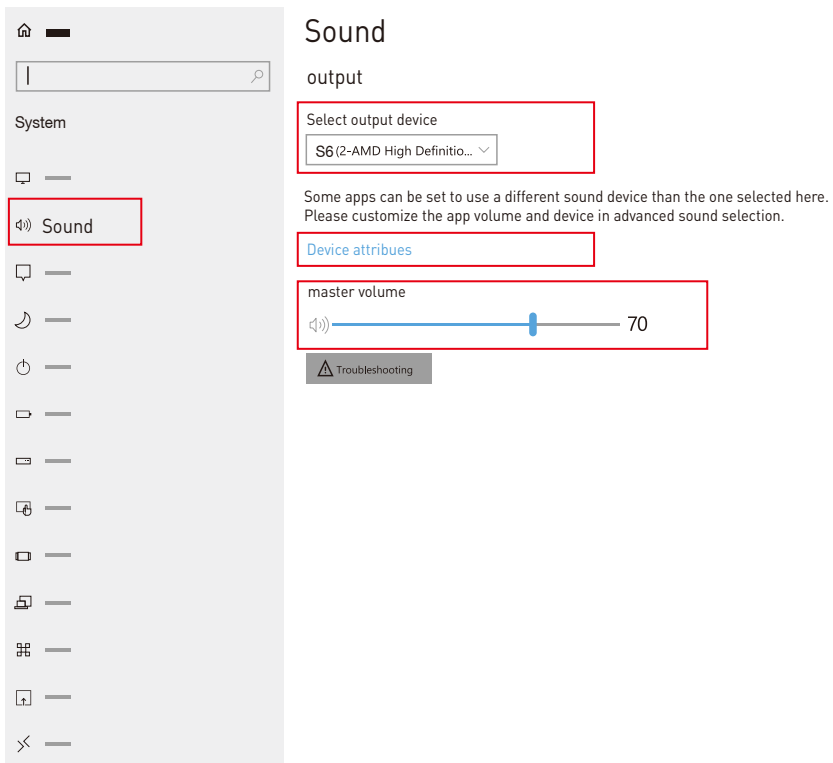


1.2 Select "switch on sound" in pop-up dialog box

1.3 Left click "turn on sound settings" and pop-up the box as provided, here users can set about sound

Here users can set about sound

1. Master volume;
2. Select output device: { S6 / Speaker };
3. Device attributes.



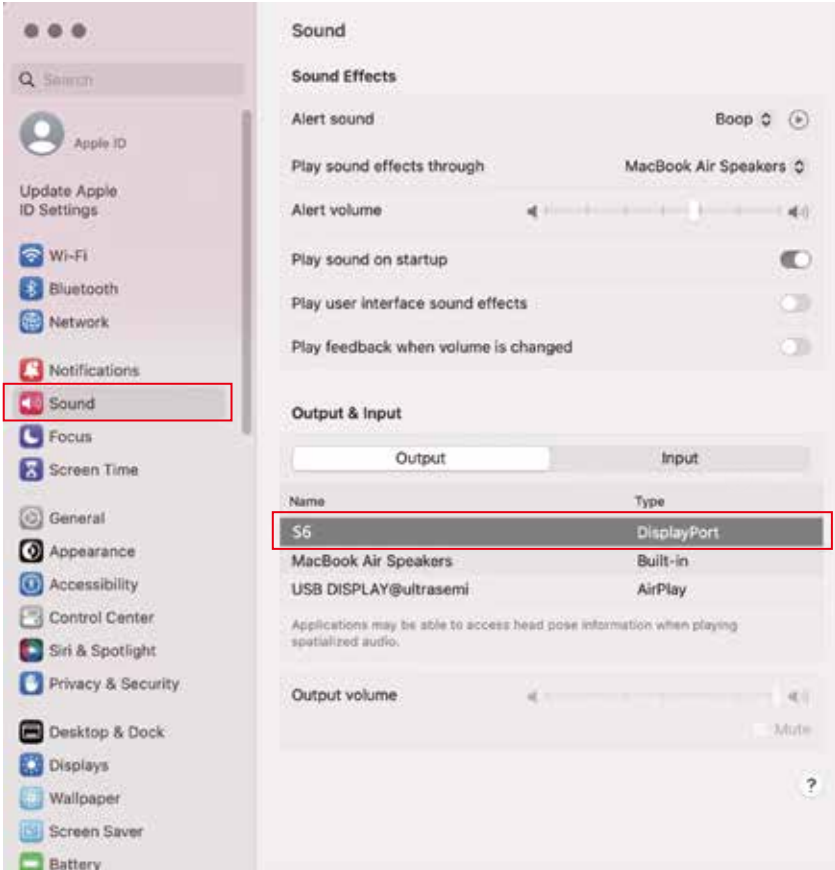
Audio Settings

2. Change sound settings of MAC OS PC

2.1. Choose Apple menu > System Settings



2.2. Click "Output", then select the device you want use for the list of sound output devices: (S6 / Speaker)

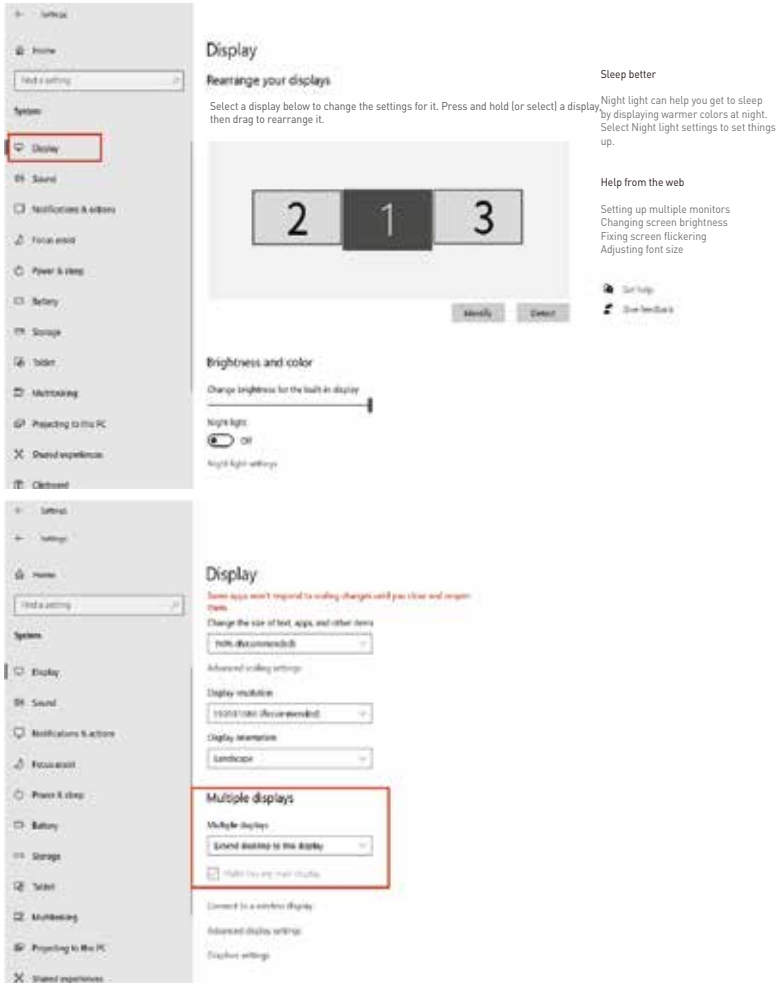


Display Mode

1. Windows 10 / Windows 11 Display Settings

1.1 Right-click a blank area of the desktop. Select 'Display Settings' from the pop-up dialogue box.

Left click "Display Settings" to open the settings dialogue box, shown in the figure:



1.2 Under the "Rearrange displays" section, drag and drop each display to rearrange them according to their physical layout of your desktop. Scroll down to the bottom of the page to further configure the display for extended or mirrored mode.

NOTE: When installing vertically, the display direction needs to be rotated [right screen 270°, left screen 90°] in the computer display settings.

Display Mode

2. MacOS 13 Ventura Display Settings

2.1 Enter the "System Preferences" menu



2.2 Configure your monitor

In this menu, you can set the resolution and mirror/extend the display you want.



2.3 Arrange Displays

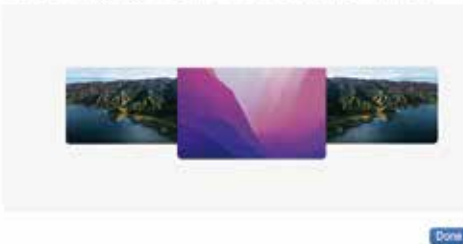
To rearrange displays, drag them to the desired position.

To mirror displays, hold Option key while dragging them on top of each other.

To relocate the menu bar, drag it to a different display.

Arrange Displays

To rearrange displays, drag them to the desired position. To mirror displays, hold Option while dragging them on top of each other. To relocate the menu bar, drag it to a different display.



Transportation, Storage And Safety Information

To ensure the safe and proper usage of this product and to prevent potential accidents such as electric shock or fire, it is essential to thoroughly read and comprehend all usage requirements and operational procedures before utilizing it. Kindly adhere strictly to the following guidelines:

1. Before use, kindly remove the protective film covering the screen surface.
2. The DC power supply required for this product is an AC/DC power adapter. Ensure it is positioned far away from heat sources and placed in a well-ventilated area. The AC power socket and AC power line must be properly grounded and capable of handling the necessary current demand.
3. The DC power input required for this product is 5V-20V±2V.
4. Take care to prevent excessive humidity and dust accumulation to avoid circuit corrosion and potential failures.
5. Avoid subjecting the screen to external forces.
6. Refrain from using sharp tools that may damage the screen.
7. This product is suitable for general business and domestic use, with a recommended ambient temperature ranging from -20°C to 60°C.
8. Remember to power off the device when not in use.

Um die sichere und ordnungsgemäße Verwendung dieses Produkts zu gewährleisten und mögliche Unfälle wie Stromschläge oder Brände zu vermeiden, ist es wichtig, dass Sie vor der Verwendung des Geräts alle Nutzungsanforderungen und Betriebsverfahren gründlich lesen und verstehen. Bitte halten Sie sich streng an die folgenden Richtlinien:

1. Entfernen Sie vor dem Gebrauch die Schutzfolie von der Bildschirmoberfläche.
2. Die für dieses Produkt erforderliche Gleichstromversorgung ist ein AC/DC-Netzadapter. Bitte stellen Sie sicher, dass es weit von Wärmequellen entfernt und in einem gut belüfteten Bereich aufgestellt wird. Die Netzsteckdose und die Netzleitung müssen ordnungsgemäß geerdet und für den erforderlichen Strombedarf ausgelegt sein.
3. Die für dieses Produkt erforderliche Gleichstromversorgung beträgt 5V-20V±2V.
4. Vermeiden Sie übermäßige Feuchtigkeit und Staubansammlungen, um Korrosion der Schaltkreise und mögliche Ausfälle zu vermeiden.
5. Setzen Sie den Bildschirm keinen äußeren Kräften aus.
6. Verwenden Sie keine scharfen Werkzeuge, die den Bildschirm beschädigen könnten.
7. Dieses Produkt ist für den allgemeinen Geschäfts- und Hausgebrauch geeignet, mit einer empfohlenen Umgebungstemperatur von -20°C bis 60°C.
8. Vergessen Sie nicht, das Gerät auszuschalten, wenn es nicht benutzt wird.

