

S8 PRO MAX USER'S GUIDE



TRIPLE SCREEN

LAPTOP SCREEN EXTENDER

Friendly Reminders:

1. Ensure a secure connection of the Type-C data cable to the device interface.
2. This product seamlessly supports all Type-C functions, including charging and video, through a single integrated cable. In the event of screen power issues or restart difficulties, kindly provide external power of 5V, 2A.
3. To ensure an optimal user experience, the screen's default brightness has been preset to 40%. Should you require higher brightness levels, please connect an external adapter to the product's "⚡" power port.

Windows

Mac

Android

Product Introduction

S8 PRO MAX is a 1.2kg ultra-light, ultra-thin dual-screen portable monitor featuring an innovative structure that is foldable, easy to store, and ideal for various scenarios and applications. It's designed for portability and flexibility, helping you quickly set up a personal mobile workstation. It offers the perfect solution for laptop users with both multi-screen mirroring and split-screen display, boosting work efficiency by up to 50% and enabling effective multitasking. It also supports screen mirroring for select Samsung, Huawei, and other smart-phone brands, as well as PC mode, audio, and video transmission.

The S8 PRO MAX stand is easy to use—just gently open it and clip it onto the top of your laptop screen for a firm, secure fit without slipping. It is compatible with laptop sizes ranging from 14 inches to 17.3 inches. Each screen comes with its own adjustable support stand, allowing you to customize the viewing angle. It provides a versatile experience for professionals, office workers, gamers, stock traders, entrepreneurs, programmers, and students alike.

The S8 PRO MAX screen supports brightness, volume, and contrast adjustments. It features full-function Type-C and PD power supply interfaces, enabling versatile video and data expansion without the need for a docking station. As long as the laptop's Type-C port supports both data and power transmission, seamless connection and display can be achieved. Additionally, devices with HDMI output (such as desktops, laptops, mini PCs, set-top boxes, and gaming consoles) can also be directly connected. However, please note that the screen requires external power to operate and must be connected using the included custom HDMI-to-Type-C cable.

Finally, the S8 PRO MAX screen supports a 180-degree rotation for single-screen use, allowing you to freely adjust to the best viewing angle based on your needs, offering an ultimate visual experience.

Contents of Instruction

Product Attributes

1. Product host	1
2. Accessories	1
3. Parameters	1

Installation and stowing Mode

1. Opening mode	2
2. Outrigger stretch	2
3. Fixing mode of device	2
4. Opening mode when it is working	3
5. Stowing of dual screen	3

Key Definitions	3
-----------------------	---

Connection Mode

1. Connect S8 PRO MAX With Laptop	4
2. Device power supply connection mode	5

Audio Settings

1. Change sound settings of Windows 10 / Windows 11	6
2. Change sound settings of MAC OS PC	7

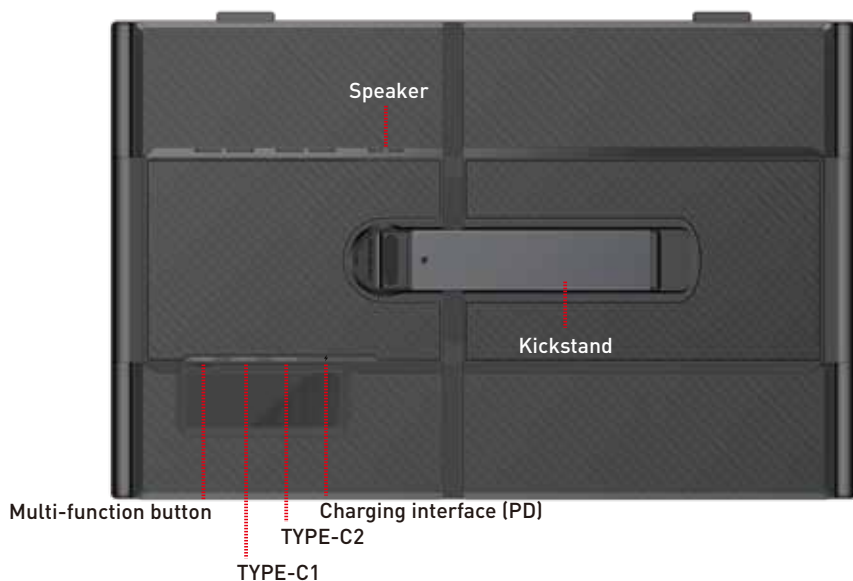
Display Mode

1. Windows 10 / Windows 11 Display Settings and Configuration	8
2. MacOS 13 Ventura Display Settings and Configuration	9

Transportation, Storage and Safety Information	10
--	----

Product Attributes

1. Product host



2. Accessories



Monitor



USB-A to USB-C *1



USB-C to USB-C *2



HD to TYPE-C *1



Bag



H5-T

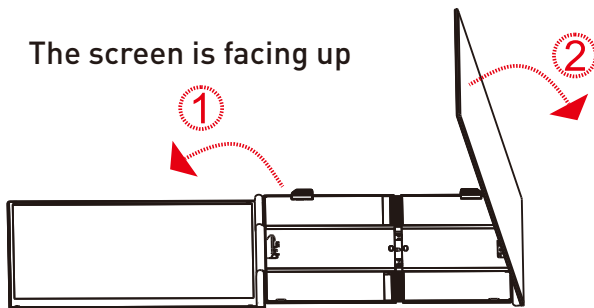
3. Parameters

Weight:	≈1.2Kg	Screen Size:	15.3 Inches
Size:	364.4×237.43×21mm	Average Brightness:	300cd/m ²
Refresh Rate:	60Hz	Type-C Input:	5V-20V / 5A Max
Resolution:	1920x1200	Type-C Output:	5V-20V / 4.25A Max
Speaker:	1	Ports:	TYPE-C*2+TYPE-C(PD Power Supply)

Installation and Stowing Mode

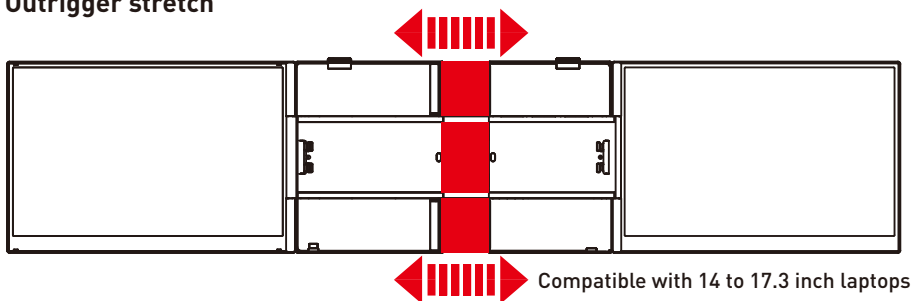
1. Opening mode

The screen is facing up



Opening Sequence: Slowly open the left screen first, then slowly open the right screen.
The screen supports a maximum folding angle of 180 degrees.

2. Outrigger stretch

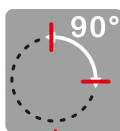
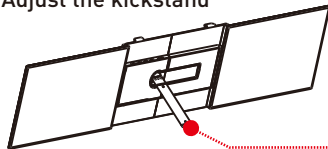


Note:

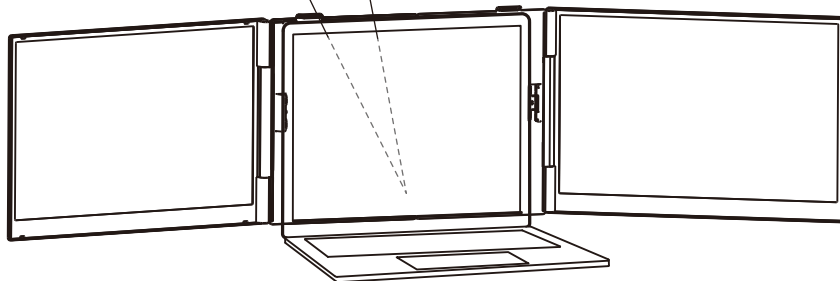
1. 14-inch laptop refers to a device with a 16:9 aspect ratio.
2. Laptops smaller than 14 inches can be placed behind the portable screen.

3. Fixing mode of device

Adjust the kickstand

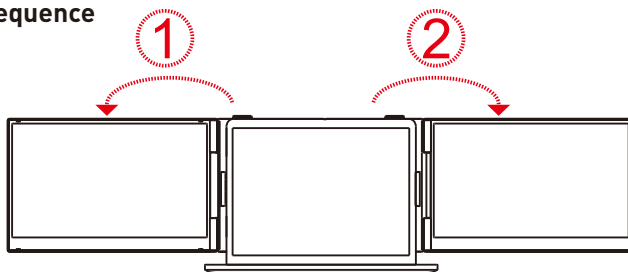


1. First open the support rod, and then stretch the support to the appropriate size;
2. The support rod only supports clockwise rotation of 90 degrees;
3. The maximum opening angle of the support rod is 90 degrees, and excessive folding will damage the support rod.



Installation and Storage

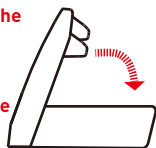
4. Opening Sequence



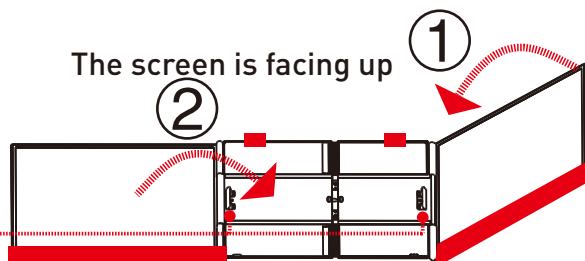
Note: Please follow the sequence of opening and closing to avoid damage of the device.

5. Closing Sequence

Always make sure the small flap closes properly before storing the screen, or you could damage the display.



The screen is facing up

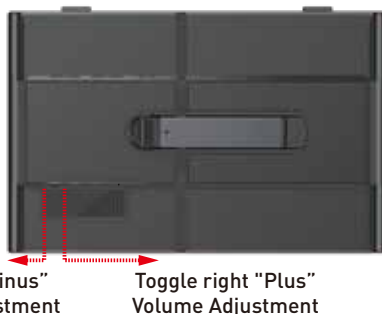


1. When storing the device, ensure the product stand is positioned upward and the wide edge of the screen faces downward. The right screen must be stored first to avoid screen damage.
2. Always make sure the small flap closes properly before storing the screen, or you could damage the display.

Key Definitions



Menu/Selection/Confirmation Button
Press and hold for 2 seconds to return
Press and hold for 3 seconds to shut down



Toggle left "Minus"
Backlight Adjustment

Toggle right "Plus"
Volume Adjustment

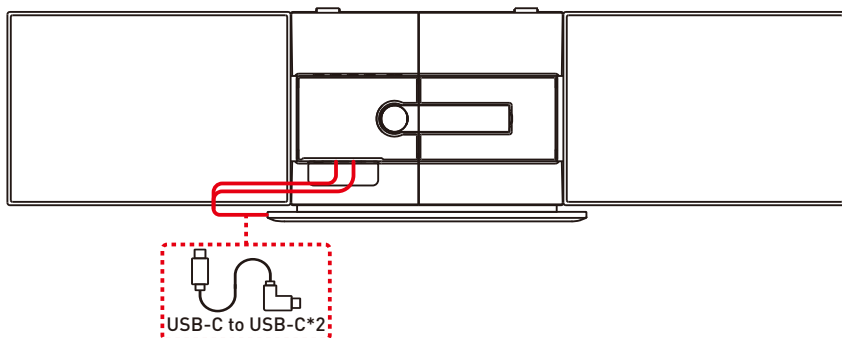
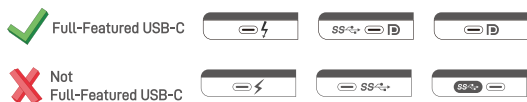
Connection Mode

1. Connect S8 PRO MAX with Laptop

To start, determine how many video output ports your laptop has. It is important to note that only full-featured USB Type-C and HDMI ports are compatible with this setup. Full-featured Type-C ports can transfer power, video, and data simultaneously. Below are the available options based on your laptop's ports:

1.1 Two Full-Featured Type-C Connection:

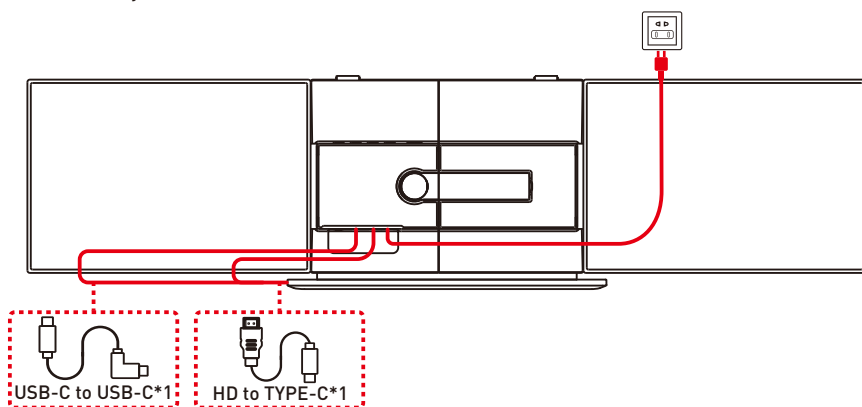
Please note that two USB-C to USB-C cables will be required.



Note: The screen's default brightness is set to 40%. If higher brightness is needed, please connect an external power supply to the Type-C (⚡) port to power the screen.

1.2 One Full-Featured Type-C and One HDMI Connection:

Please note that you will need one USB-C to USB-C cable and one HDMI cable.



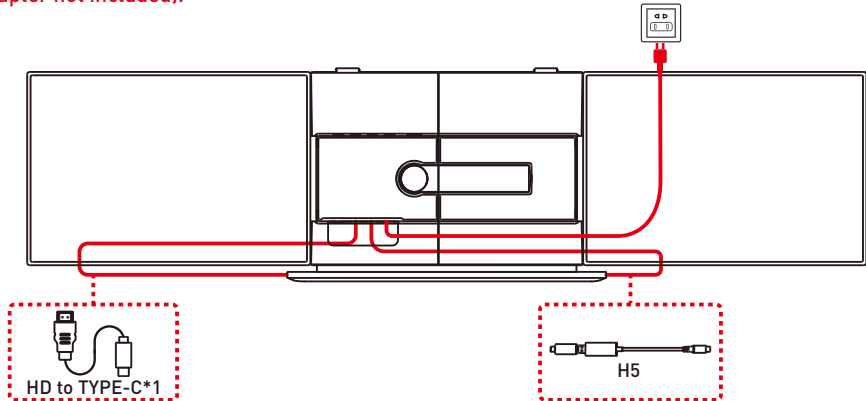
Note: The screen's default brightness is set to 40%. If higher brightness is needed, please connect an external power supply to the Type-C (⚡) port to power the screen.

Connection Mode

1.3 No Full-Featured Type-C Connection:

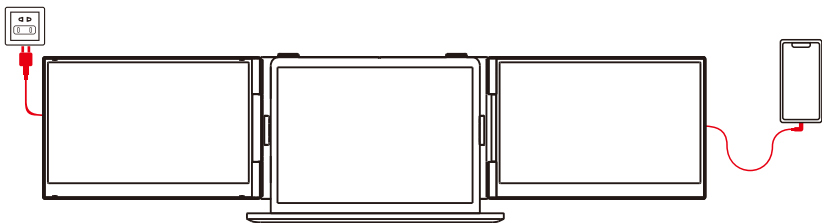
In this case, your laptop must have a USB-A port (or a standard USB-C port) and an HDMI port. Please use a USB to HDMI conversion cable (H5) along with an HDMI cable for the connection.

The product requires a 5V/2A or higher external adapter connected to its power interface (adapter not included).

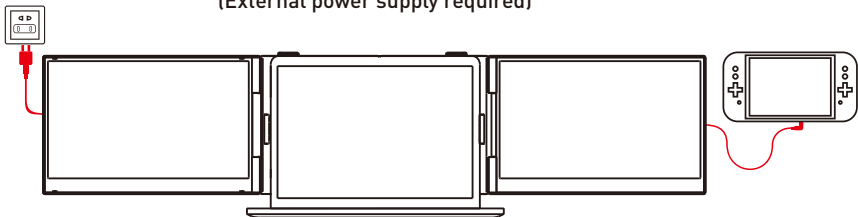


Note: If the product does not function properly or the brightness is insufficient during use, please connect a 5V/2A or higher adapter to the power supply interface of the product. (The adapter is not included in the product package.)

2. Connect S8 PRO MAX with Mobile Phone with Other Devices



Mobile phone connection mode
(External power supply required)



Switch connection mode
(External power supply required)

Audio Settings

1. Change sound settings of Windows 10 / Windows 11

1.1 Right click the loudspeaker icon located in the bottom-right corner.

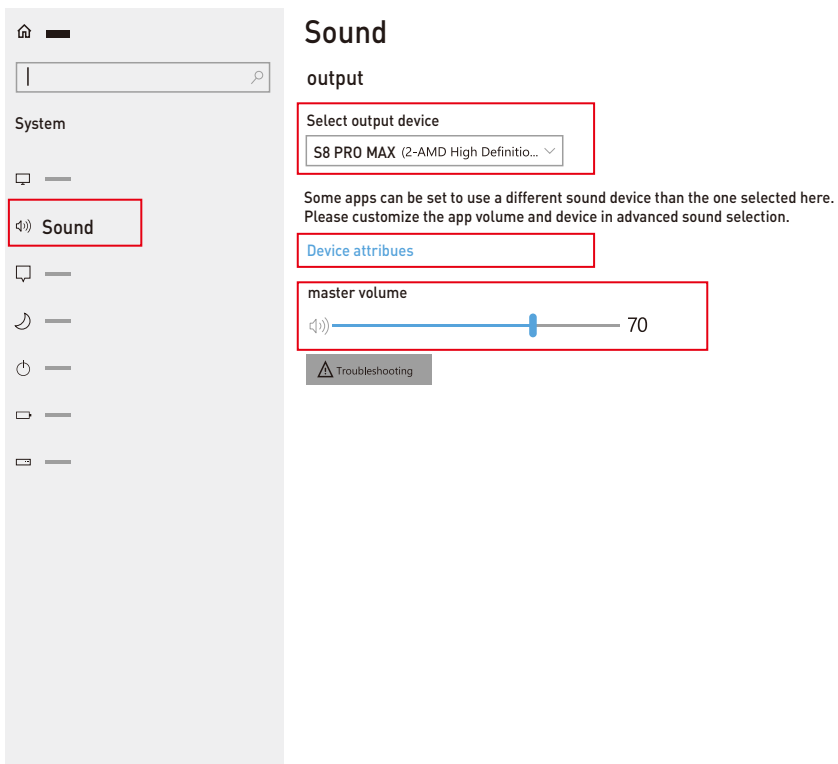


1.2 Select "switch on sound " in pop-up dialog box.

1.3 Left click "turn on sound settings" and pop-up the box as provided.

Here users can set about sound

1. Master volume;
2. Select output device: { S8 PRO MAX / Speaker };
3. Device attributes.



Audio Settings

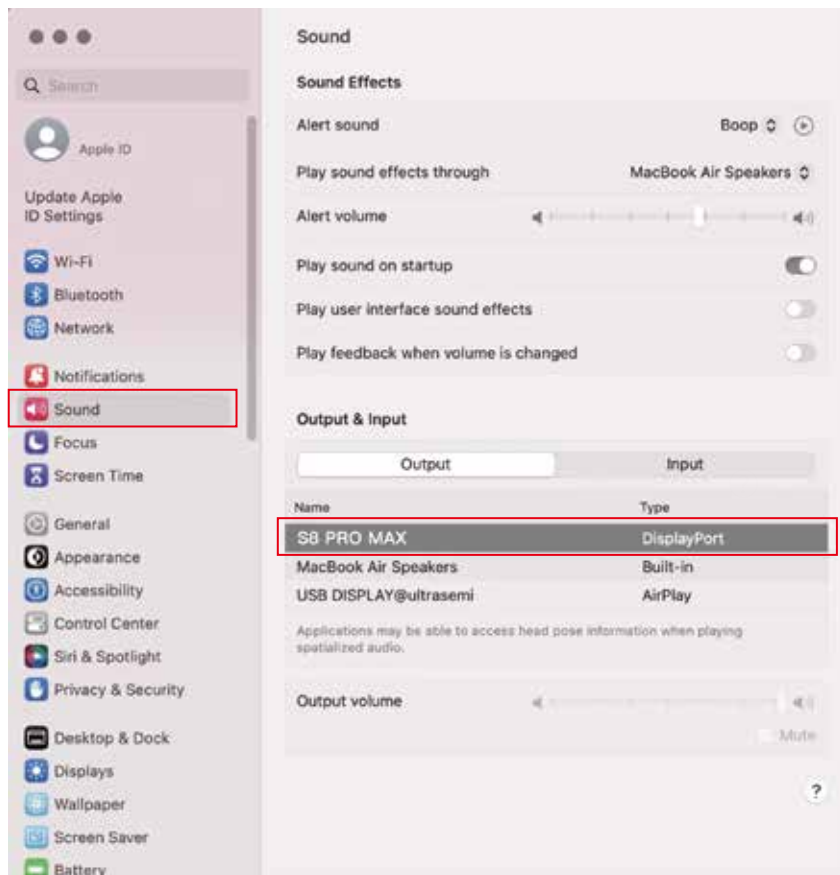
2. Change sound settings of MAC OS PC

2.1. Choose Apple menu > System Settings



2.2. Click on "Output" and then choose the desired device from the list of available sound output options.

Output devices: { S8 PRO MAX / Speaker }

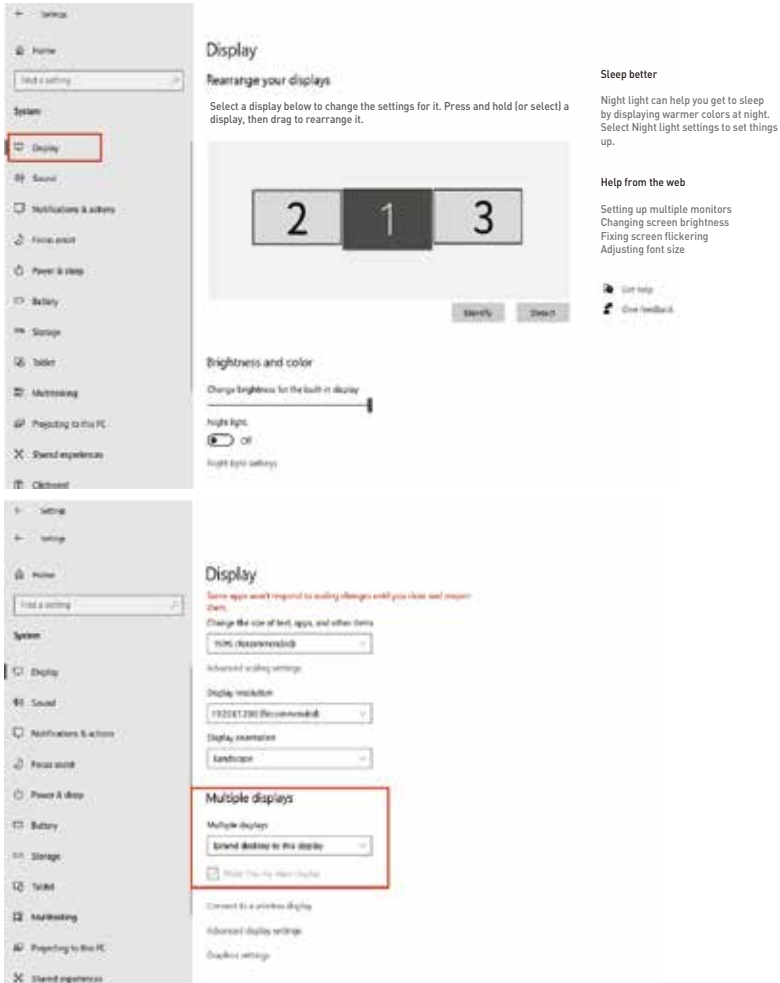


Display Mode

1. Windows 10 / Windows 11 Display Settings

1.1 Right-click a blank area of the desktop. Select 'Display Settings' from the pop-up dialogue box.

Left click "Display Settings" to open the settings dialogue box, shown in the figure:



1.2 Under the "Rearrange displays" section, drag and drop each display to rearrange them according to their physical layout of your desktop. Scroll down to the bottom of the page to further configure the display for extended or mirrored mode.

2. MacOS 13 Ventura Display Settings

2.1 Enter the "System Preferences" menu



2.2 Configure your monitor

In this menu, you can set the resolution and mirror/extend the display you want.



2.3 Arrange Displays

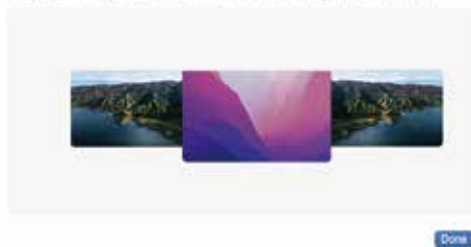
To rearrange displays, drag them to the desired position.

To mirror displays, hold Option key while dragging them on top of each other.

To relocate the menu bar, drag it to a different display.

Arrange Displays

To rearrange displays, drag them to the desired position. To mirror displays, hold Option while dragging them on top of each other. To relocate the menu bar, drag it to a different display.



Transportation, Storage and Safety Information

To ensure the safe and proper use of this product and prevent accidents such as electric shock or fire, please read and understand all use requirements and operation procedures before using.

Please adhere strictly to the following guidelines:

1. Before use, remove the protective film from the screen surface.
2. This product requires a DC power supply through an AC/DC power adapter. Ensure that the adapter is placed away from heat sources in a well-ventilated location. The AC power socket and AC power line should be adequately grounded to handle the current demands.
3. The DC power input required for this product is $5V-20V \pm 2V$.
4. Take precautions to prevent excessive humidity and dust accumulation, as they can lead to circuit corrosion and malfunction.
5. Avoid subjecting the screen surface to external forces or impacts.
6. Do not use sharp tools that may damage the screen surface.
7. This product is suitable for general business and domestic use, and it is recommended to operate it within an ambient temperature range of -20°C to 60°C . Please turn off the power when you stop using produce.
8. Remember to power off the device by disconnecting the power source when not in use.

