

S8 ULTRA MAX USER'S GUIDE



TRIPLE SCREEN

LAPTOP SCREEN EXTENDER

Friendly Reminders:

1. Ensure a secure connection of the Type-C data cable to the device interface.
2. When connecting to the laptop's USB-A port, an external PD adapter must be utilized to supply power to the device, ensuring its proper functionality.
3. To ensure an optimal user experience, the screen's default brightness has been preset to 40%. Should you require higher brightness levels, please connect an external adapter to the product's "⚡" power port.

Windows

Mac

Product Introduction

The S8 ULTRA MAX is a 1.2KG ultra-light and ultra-thin dual-screen portable monitor featuring an innovative structure. It is ultra-light, ultra-thin, foldable, and designed for multi-scene and multi-application use. It supports lighting up two screens with a single cable, helping you quickly set up a personal mobile studio. It provides the perfect solution for laptop users for multi-screen synchronization and split-screen display, boosting work efficiency by up to 50% and enabling efficient multitasking.

The S8 ULTRA MAX stand is easy to use. Simply pull it open and clip it onto the top of the laptop screen for secure and stable installation without falling off. It supports laptop cases ranging from 14 inches to 17.3 inches. The screen is equipped with a built-in adjustable stand, offering different viewing angles to enhance the experience for professionals, office workers, gamers, stock traders, entrepreneurs, programmers, and students.

The S8 ULTRA MAX screen allows you to adjust brightness, volume, contrast, and other parameters. It is equipped with a full-featured Type-C and PD power supply interface, enabling diversified video and data expansion without the need for a docking station. It supports lighting up two screens with a single cable, as long as your laptop (running macOS or Windows) has a Type-C port that supports both signal and power transmission. In addition, devices with a USB-A output interface (such as desktop computers, laptops) can also be connected directly. However, please note that an external power supply is required to light up the screen (using the included USB-A to Type-C cable to connect the monitor to the computer).

Finally, the S8 ULTRA MAX screen supports 180-degree rotation, allowing you to freely adjust to the best viewing angle according to your needs, providing an ultimate visual experience.

Contents of Instruction

Product Attributes

1. Product host	1
2. Accessories	1
3. Parameters	1

Installation and stowing Mode

1. Opening mode	2
2. Outrigger stretch	2
3. Fixing mode of device	2
4. Opening mode when it is working	3
5. Stowing of dual screen	3

Key Definitions	3
-----------------------	---

Connection Mode

1. Driver Installation	4
2. Connect S8 ULTRA MAX With Laptop	5

Audio Settings

1. Change sound settings of Windows 10 / Windows 11	6
2. Change sound settings of MAC OS PC	7

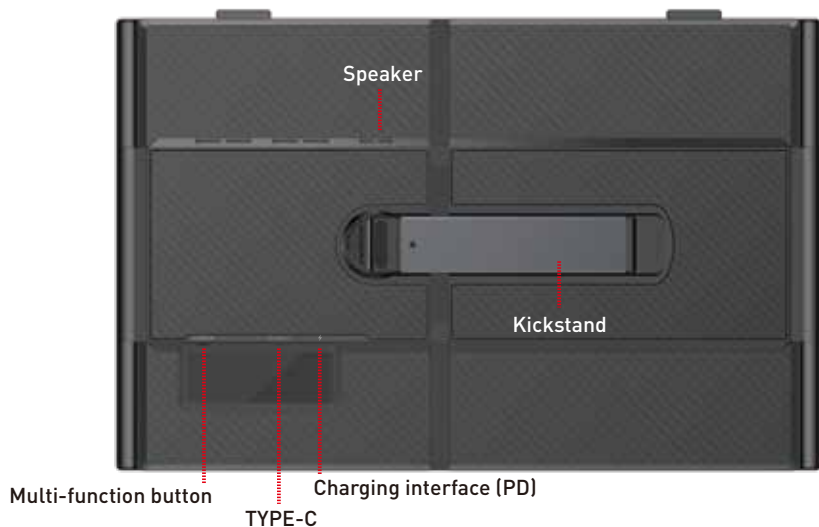
Display Mode

1. Windows 10 / Windows 11 Display Settings and Configuration	8
2. MacOS 13 Ventura Display Settings and Configuration	9

Transportation, Storage and Safety Information	10
--	----

Product Attributes

1. Product host



2. Accessories



Monitor



USB-A to USB-C *1



USB-C to USB-C *2



Bag



Power Adapter



USB Flash Disk

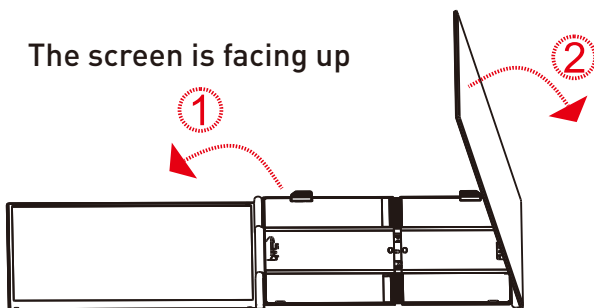
3. Parameters

Weight:	≈1.2Kg	Screen Size:	15.3 Inches
Size:	364.4×237.43×21mm	Average Brightness:	300cd/m ²
Refresh Rate:	60Hz	Type-C Input:	5V-20V / 5A Max
Resolution:	1920x1200	Type-C Output:	5V-20V / 4.25A Max
Speaker:	1	Ports:	TYPE-C +TYPE-C (PD Power Supply)
Compatible systems: Windows /MAC OS			

Installation and Stowing Mode

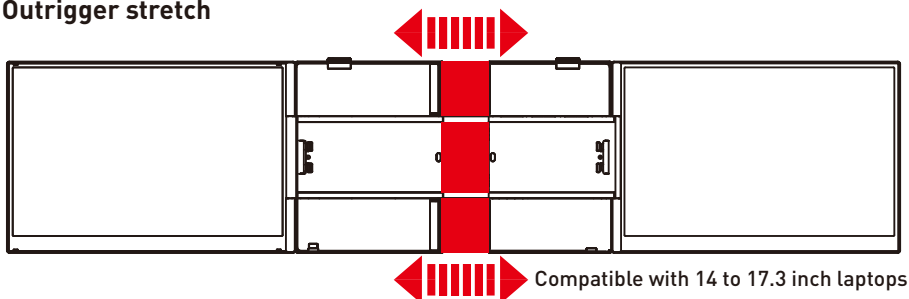
1. Opening mode

The screen is facing up



Opening Sequence: Slowly open the left screen first, then slowly open the right screen.
The screen supports a maximum folding angle of 180 degrees.

2. Outrigger stretch

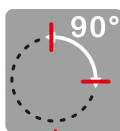
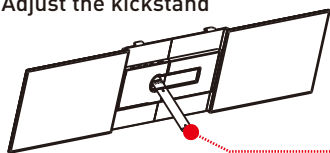


Note:

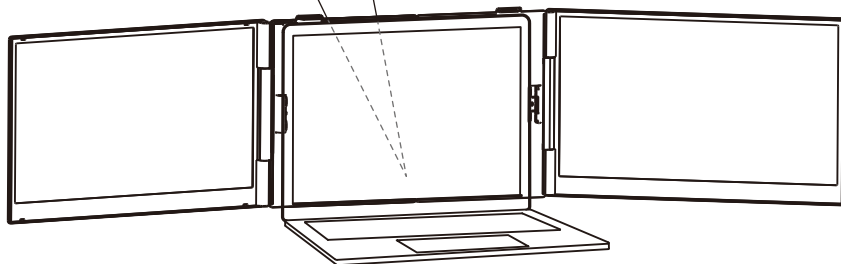
1. 14-inch laptop refers to a device with a 16:9 aspect ratio.
2. Laptops smaller than 14 inches can be placed behind the portable screen.

3. Fixing mode of device

Adjust the kickstand

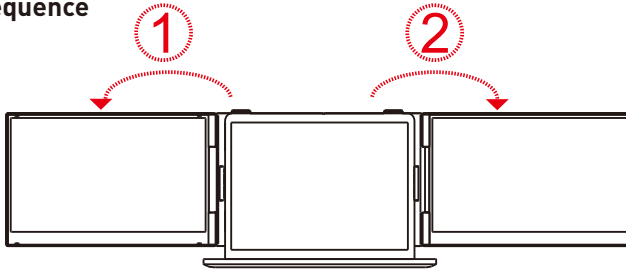


1. First open the support rod, and then stretch the support to the appropriate size;
2. The support rod only supports clockwise rotation of 90 degrees;
3. The maximum opening angle of the support rod is 90 degrees, and excessive folding will damage the support rod.



Installation and Storage

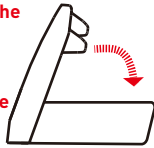
4. Opening Sequence



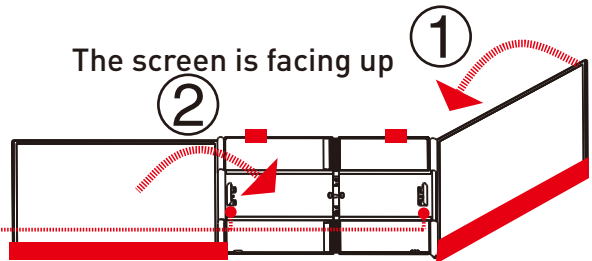
Note: Please follow the sequence of opening and closing to avoid damage of the device.

5. Closing Sequence

Always make sure the small flap closes properly before storing the screen, or you could damage the display.



The screen is facing up



1. When storing the device, ensure the product stand is positioned upward and the wide edge of the screen faces downward. The right screen must be stored first to avoid screen damage.
2. Always make sure the small flap closes properly before storing the screen, or you could damage the display.

Key Definitions



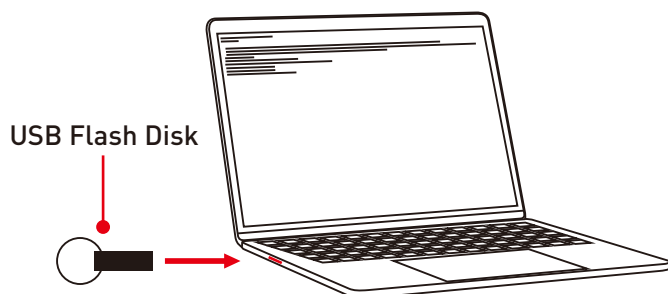
Toggle left "Minus"
Backlight Adjustment

Toggle right "Plus"
Volume Adjustment

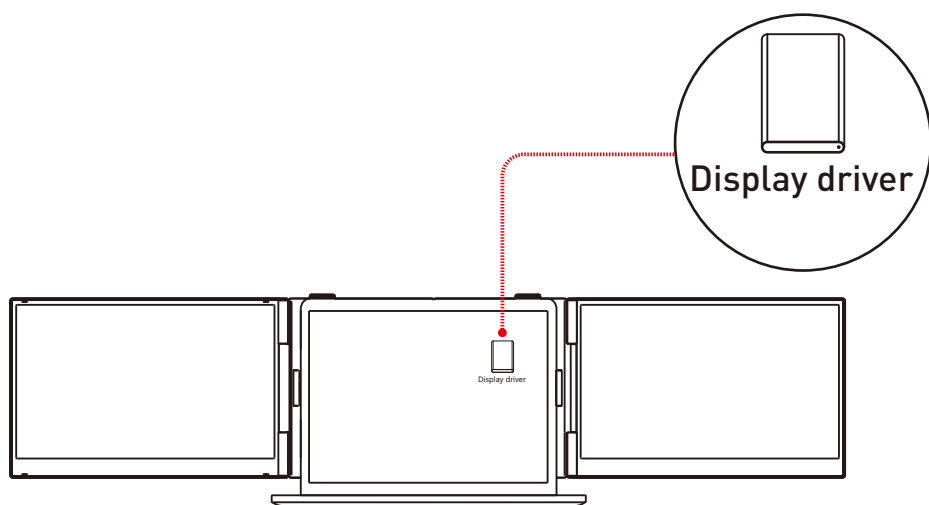
Menu/Selection/Confirmation Button
Press and hold for 2 seconds to return
Press and hold for 3 seconds to shut down

Driver Installation

1.Driver Installation for Computers



Note:Insert USB Flash Disk



Note: When connected, your laptop will automatically install the necessary drivers. To manually install, run the SMIUSBdisplaysW.exe file located in the USB Flash Disk drive. For MacOS Systems, install the appropriate InstantView.exe driver and follow the on-screen instructions.

Connection Mode

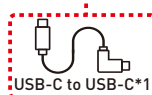
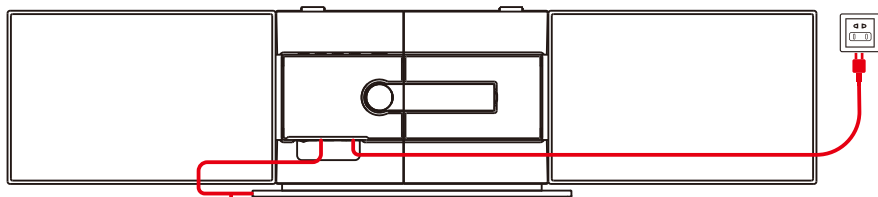
2. Connect S8 ULTRA MAX with Laptop

2.1 Type-C Connection:

If your laptop has a TYPE-C port, you can directly connect the S8 ULTRA MAX to the laptop's TYPE-C port with a USB-C TO USB-C cable.



Full-Featured USB-C

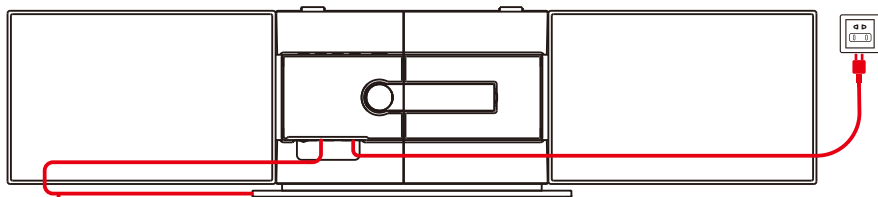


USB-C to USB-C*1

Note: The screen's default brightness is set to 40%. If higher brightness is needed, please connect an external power supply to the Type-C (⚡) port to power the screen.

Note: Before using the product, install the driver first.

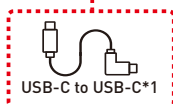
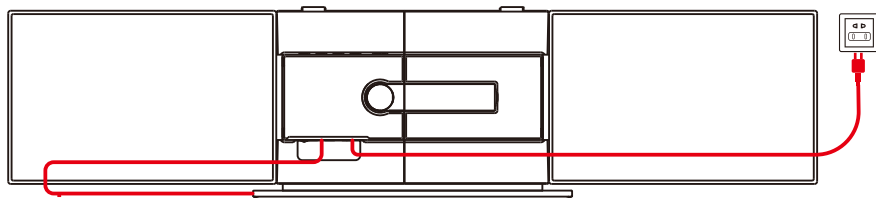
If your laptop has a USB-A port, you can directly connect the S8 ULTRA MAX to the laptop's USB-A port with a USB-A TO USB-C cable. please connect an external adapter to the product's PD interface for power supply. The adapter is included in the package.



USB-A to USB-C*1

2.2 Product External Power Connection Method:

If your laptop's TYPE-C port has a power supply capacity of $\leq 10W$, please connect an external supply adapter to the product's PD interface for power supply. The adapter is included in the package.



USB-C to USB-C*1

Notice:

If the display has no signal or the signal is unstable after connection, please connect an external power adapter to power the laptop.

Audio Settings

1. Change sound settings of Windows 10 / Windows 11

1.1 Right click the loudspeaker icon located in the bottom-right corner.

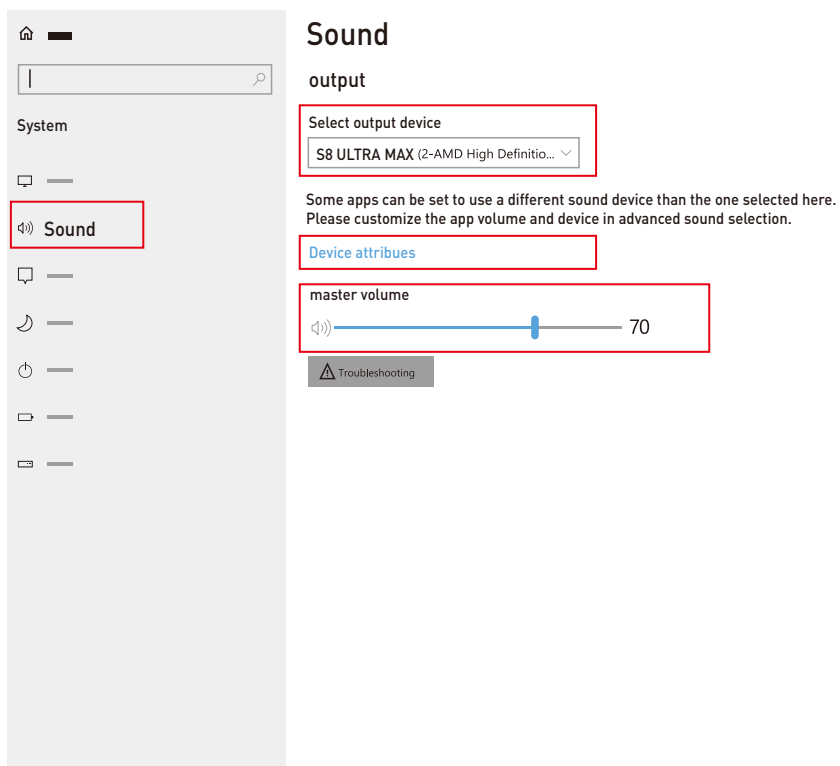


1.2 Select "switch on sound" in pop-up dialog box.

1.3 Left click "turn on sound settings" and pop-up the box as provided.

Here users can set about sound

1. Master volume;
2. Select output device: { S8 ULTRA MAX / Speaker };
3. Device attributes.



Audio Settings

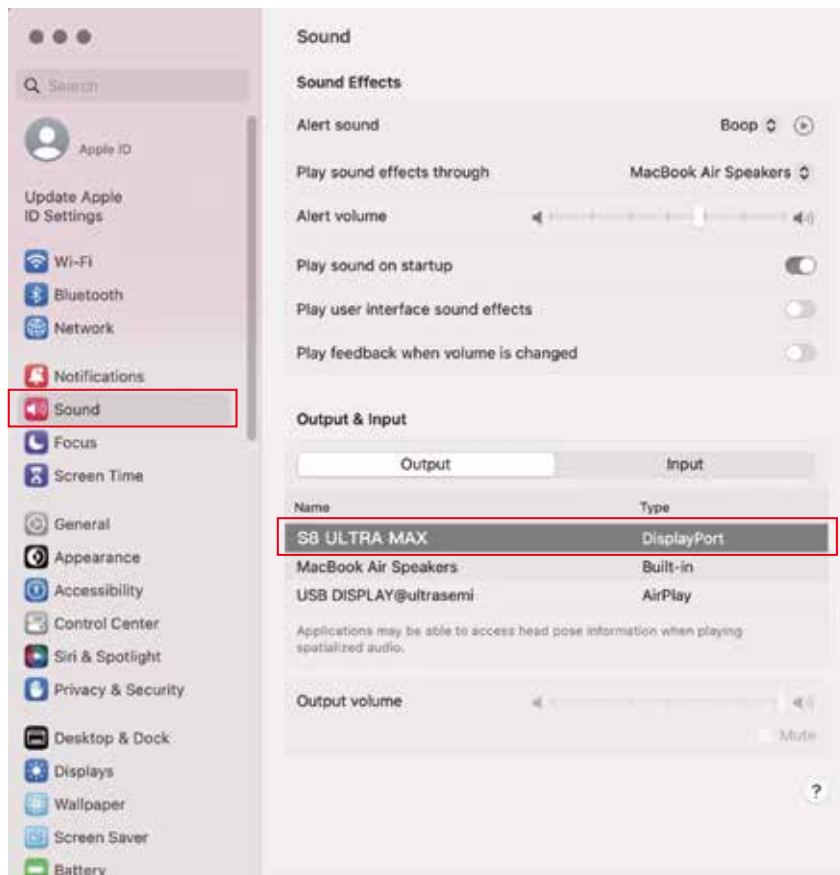
2. Change sound settings of MAC OS PC

2.1. Choose Apple menu > System Settings



2.2. Click on "Output" and then choose the desired device from the list of available sound output options.

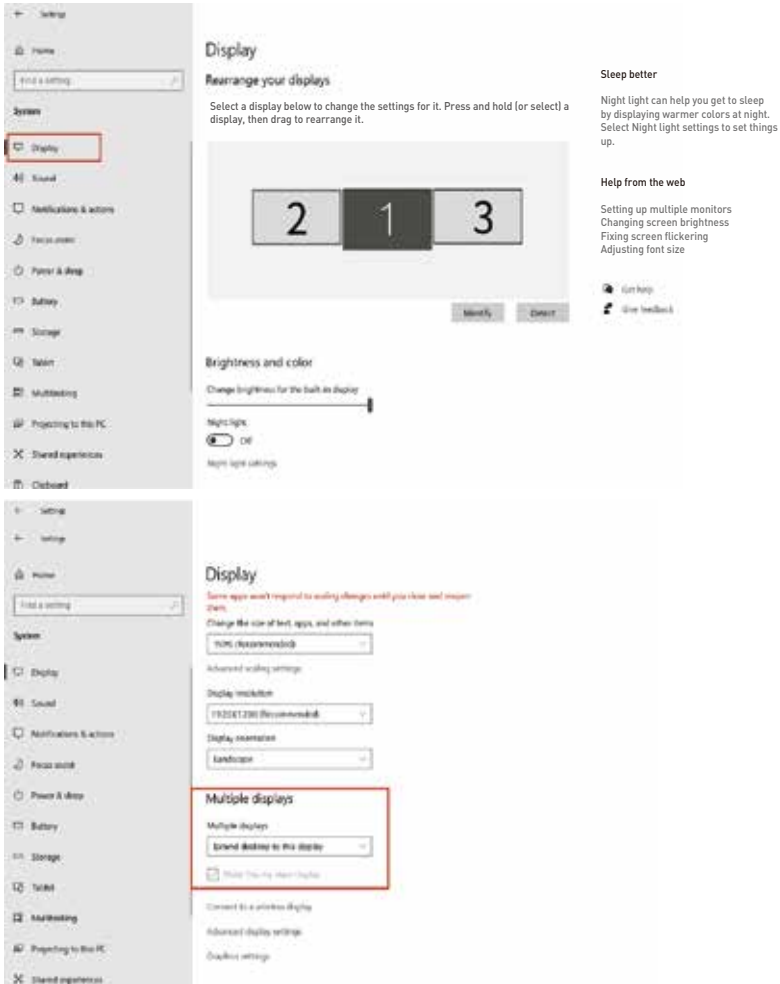
Output devices: { S8 ULTRA MAX / Speaker }



1. Windows 10 / Windows 11 Display Settings

1.1 Right-click a blank area of the desktop. Select 'Display Settings' from the pop-up dialogue box.

Left click "Display Settings" to open the settings dialogue box, shown in the figure:



1.2 Under the "Rearrange displays" section, drag and drop each display to rearrange them according to their physical layout of your desktop. Scroll down to the bottom of the page to further configure the display for extended or mirrored mode.

Display Mode

2. MacOS 13 Ventura Display Settings

2.1 Enter the "System Preferences" menu



2.2 Configure your monitor

In this menu, you can set the resolution and mirror/extend the display you want.



2.3 Arrange Displays

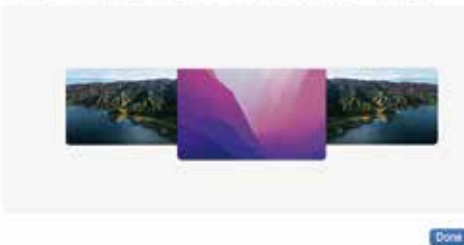
To rearrange displays, drag them to the desired position.

To mirror displays, hold Option key while dragging them on top of each other.

To relocate the menu bar, drag it to a different display.

Arrange Displays

To rearrange displays, drag them to the desired position. To mirror displays, hold Option while dragging them on top of each other. To relocate the menu bar, drag it to a different display.



Transportation, Storage and Safety Information

To ensure the safe and proper use of this product and prevent accidents such as electric shock or fire, please read and understand all use requirements and operation procedures before using.

Please adhere strictly to the following guidelines:

1. Before use, remove the protective film from the screen surface.
2. This product requires a DC power supply through an AC/DC power adapter. Ensure that the adapter is placed away from heat sources in a well-ventilated location. The AC power socket and AC power line should be adequately grounded to handle the current demands.
3. The DC power input required for this product is $5V-20V \pm 2V$.
4. Take precautions to prevent excessive humidity and dust accumulation, as they can lead to circuit corrosion and malfunction.
5. Avoid subjecting the screen surface to external forces or impacts.
6. Do not use sharp tools that may damage the screen surface.
7. This product is suitable for general business and domestic use, and it is recommended to operate it within an ambient temperature range of -20°C to 60°C . Please turn off the power when you stop using produce.
8. Remember to power off the device by disconnecting the power source when not in use.

